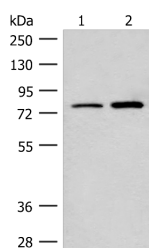


## THOP1 Polyclonal Antibody

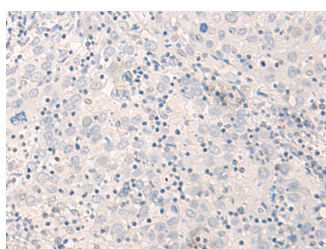
<b>Catalog No.</b>	E-AB-18748	<b>Reactivity</b>	H,M,R
<b>Storage</b>	Store at -20°C. Avoid freeze / thaw cycles.	<b>Host</b>	Rabbit
<b>Applications</b>	WB,IHC,ELISA	<b>Isotype</b>	IgG

**Note:** Centrifuge before opening to ensure complete recovery of vial contents.

### Images



Western blot analysis of Human cerebrum tissue and Human fetal brain tissue lysates using THOP1 Polyclonal Antibody at dilution of 1:250



Immunohistochemistry of paraffin-embedded Human cervical cancer tissue using THOP1 Polyclonal Antibody at dilution of 1:35(×200)

### Immunogen Information

<b>Immunogen</b>	Fusion protein of human THOP1
<b>Gene Accession</b>	BC013878
<b>Swissprot</b>	P52888
<b>Synonyms</b>	EC 3.4.24.15,Endopeptidase 24.15,EP24.15,MEPD,MP78,Thimet oligopeptidase 1,Thimet oligopeptidase,Thop1,THOP1, TOP

### Product Information

<b>Calculated MW</b>	79 kDa
<b>Observed MW</b>	Refer to figures
<b>Buffer</b>	PBS with 0.05% NaN <sub>3</sub> and 40% Glycerol,pH7.4
<b>Purify</b>	Antigen affinity purification
<b>Dilution</b>	WB 1:500-1:2000, IHC 1:25-1:100, ELISA 1:2000-1:5000

### Background

The protein encoded by this gene is a kinase that uses zinc as a cofactor. The encoded oligopeptidase cleaves cytosolic peptides, making them unavailable for display on antigen-presenting cells. This protein also cleaves neuropeptides under 20 aa in length and can degrade beta-amyloid precursor protein to amyloidogenic peptides.

#### For Research Use Only

Thank you for your recent purchase.  
 If you would like to learn more about antibodies, please visit [www.elabscience.com](http://www.elabscience.com).

**Focus on your research  
 Service for life science**

Applications:WB-Western Blot IHC-Immunohistochemistry IF-Immunofluorescence IP-Immunoprecipitation FC-Flow cytometry ChIP-Chromatin Immunoprecipitation Reactivity: H-Human R-Rat M-Mouse Mk-Monkey Dg-Dog Ch-Chicken Hm-Hamster Rb-Rabbit Sh-Sheep Pg-Pig Z-Zebrafish X-Xenopus C-Cow.