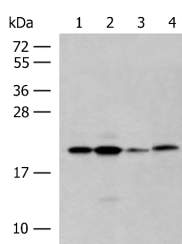


RNF5 Polyclonal Antibody

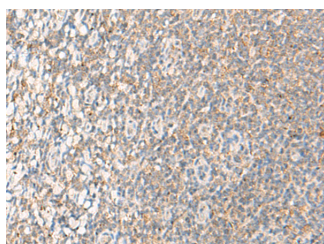
| | | | |
|---------------------|---|-------------------|--------|
| Catalog No. | E-AB-18788 | Reactivity | H,M,R |
| Storage | Store at -20°C. Avoid freeze / thaw cycles. | Host | Rabbit |
| Applications | WB,IHC,ELISA | Isotype | IgG |

Note: Centrifuge before opening to ensure complete recovery of vial contents.

Images



Western blot analysis of 293T cell lysates using RNF5 Polyclonal Antibody at dilution of 1:250



Immunohistochemistry of paraffin-embedded Human tonsil tissue using RNF5 Polyclonal Antibody at dilution of 1:40(×200)

Immunogen Information

| | |
|-----------------------|---|
| Immunogen | Fusion protein of human RNF5 |
| Gene Accession | BC004155 |
| Swissprot | Q99942 |
| Synonyms | 16,HsRma1,NG2,Protein G16,Ram1 homolog,RING finger protein 5,RING5,RMA1,RNF5,RNF5 |

Product Information

| | |
|----------------------|---|
| Calculated MW | 20 kDa |
| Observed MW | Refer to figures |
| Buffer | PBS with 0.05% NaN3 and 40% Glycerol,pH7.4 |
| Purify | Antigen affinity purification |
| Dilution | WB 1:500-1:2000, IHC 1:30-1:150, ELISA 1:5000-1:10000 |

Background

The protein encoded by this gene contains a RING finger, which is a motif known to be involved in protein-protein interactions. This protein is a membrane-bound ubiquitin ligase. It can regulate cell motility by targeting paxillin ubiquitination and altering the distribution and localization of paxillin in cytoplasm and cell focal adhesions.

For Research Use Only

Thank you for your recent purchase.
 If you would like to learn more about antibodies, please visit www.elabscience.com.

**Focus on your research
 Service for life science**

Applications:WB-Western Blot IHC-Immunohistochemistry IF-Immunofluorescence IP-Immunoprecipitation FC-Flow cytometry ChIP-Chromatin Immunoprecipitation Reactivity: H-Human R-Rat M-Mouse Mk-Monkey Dg-Dog Ch-Chicken Hm-Hamster Rb-Rabbit Sh-Sheep Pg-Pig Z-Zebrafish X-Xenopus C-Cow.