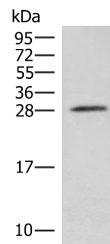


NIPSNAP3A Polyclonal Antibody

Catalog No.	E-AB-18802	Reactivity	H,M
Storage	Store at -20°C. Avoid freeze / thaw cycles.	Host	Rabbit
Applications	WB,ELISA	Isotype	IgG

Note: Centrifuge before opening to ensure complete recovery of vial contents.

Images



Western blot analysis of Mouse brain tissue lysate using NIPSNAP3A Polyclonal Antibody at dilution of 1:550

Immunogen Information

Immunogen	Fusion protein of human NIPSNAP3A
Gene Accession	BC005935
Swissprot	Q9UFN0
Synonyms	DKFZp564D177,HSPC299,NipSnap3A,NipSnap4,NP S3A,Protein NipSnap homolog 3A

Product Information

Calculated MW	28 kDa
Observed MW	Refer to figures
Buffer	PBS with 0.05% NaN ₃ and 40% Glycerol,pH7.4
Purify	Antigen affinity purification
Dilution	WB 1:500-1:2000, ELISA 1:5000-1:10000

Background

NIPSNAP3A belongs to a family of proteins with putative roles in vesicular transport.

For Research Use Only

Thank you for your recent purchase.
 If you would like to learn more about antibodies, please visit www.elabscience.com.

**Focus on your research
 Service for life science**

Applications:WB-Western Blot IHC-Immunohistochemistry IF-Immunofluorescence IP-Immunoprecipitation FC-Flow cytometry ChIP-Chromatin Immunoprecipitation Reactivity: H-Human R-Rat M-Mouse Mk-Monkey Dg-Dog Ch-Chicken Hm-Hamster Rb-Rabbit Sh-Sheep Pg-Pig Z-Zebrafish X-Xenopus C-Cow.