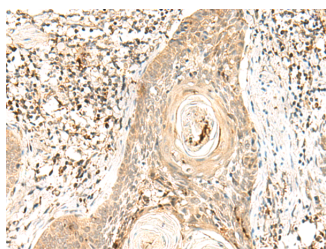


## POLR1E Polyclonal Antibody

<b>Catalog No.</b>	E-AB-18830	<b>Reactivity</b>	H
<b>Storage</b>	Store at -20°C. Avoid freeze / thaw cycles.	<b>Host</b>	Rabbit
<b>Applications</b>	IHC,ELISA	<b>Isotype</b>	IgG

**Note:** Centrifuge before opening to ensure complete recovery of vial contents.

### Images



Immunohistochemistry of paraffin-embedded Human esophagus cancer tissue using POLR1E Polyclonal Antibody at dilution of 1:40(×200)

### Immunogen Information

<b>Immunogen</b>	Fusion protein of human POLR1E
<b>Gene Accession</b>	BC014331
<b>Swissprot</b>	Q9GZS1
<b>Synonyms</b>	A49,FLJ 13390,FLJ13970,PAF53,POLR 1 E,POLR1E,PRAF1,RP11405L18.3,RPA49

### Product Information

<b>Buffer</b>	PBS with 0.05% NaN3 and 40% Glycerol,pH7.4
<b>Purify</b>	Antigen affinity purification
<b>Dilution</b>	IHC 1:30-1:150, ELISA 1:5000-1:10000

### Background

DNA-dependent RNA polymerase catalyzes the transcription of DNA into RNA using the four ribonucleoside triphosphates as substrates. Component of RNA polymerase I which synthesizes ribosomal RNA precursors. Appears to be involved in the formation of the initiation complex at the promoter by mediating the interaction between Pol I and UBTF/UBF (By similarity).

#### For Research Use Only

Thank you for your recent purchase.

If you would like to learn more about antibodies, please visit [www.elabscience.com](http://www.elabscience.com).

**Focus on your research  
 Service for life science**

Applications:WB-Western Blot IHC-Immunohistochemistry IF-Immunofluorescence IP-Immunoprecipitation FC-Flow cytometry ChIP-Chromatin Immunoprecipitation Reactivity: H-Human R-Rat M-Mouse Mk-Monkey Dg-Dog Ch-Chicken Hm-Hamster Rb-Rabbit Sh-Sheep Pg-Pig Z-Zebrafish X-Xenopus C-Cow.