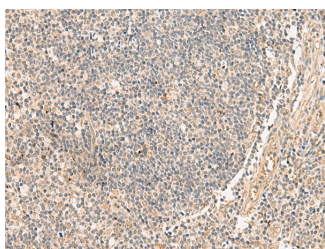


## PAF1 Polyclonal Antibody

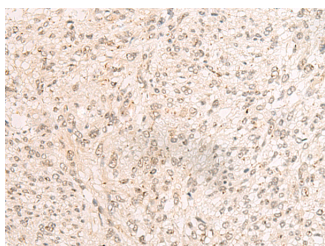
<b>Catalog No.</b>	E-AB-18844	<b>Reactivity</b>	H,M,R
<b>Storage</b>	Store at -20°C. Avoid freeze / thaw cycles.	<b>Host</b>	Rabbit
<b>Applications</b>	IHC,ELISA	<b>Isotype</b>	IgG

**Note:** Centrifuge before opening to ensure complete recovery of vial contents.

### Images



Immunohistochemistry of paraffin-embedded Human tonsil tissue using PAF1 Polyclonal Antibody at dilution of 1:45(×200)



Immunohistochemistry of paraffin-embedded Human liver cancer tissue using PAF1 Polyclonal Antibody at dilution of 1:45(×200)

### Immunogen Information

<b>Immunogen</b>	Fusion protein of human PAF1
<b>Gene Accession</b>	BC000017
<b>Swissprot</b>	Q8N7H5
<b>Synonyms</b>	F23149 1,FLJ11123,hPAF1,PAF 1,PAF1,RNA polymerase II-associated factor 1 homolog

### Product Information

<b>Buffer</b>	PBS with 0.05% NaN <sub>3</sub> and 40% Glycerol,pH7.4
<b>Purify</b>	Antigen affinity purification
<b>Dilution</b>	IHC 1:30-1:150, ELISA 1:5000-1:10000

### Background

This gene encodes a subunit of the polymerase associated factor (PAF1) complex. The PAF1 complex interacts with RNA polymerase II and plays a role in transcription elongation as well as histone modifications including ubiquitylation and methylation. Alternatively spliced transcript variants encoding multiple isoforms have been observed for this gene.

#### For Research Use Only

Thank you for your recent purchase.  
 If you would like to learn more about antibodies, please visit [www.elabscience.com](http://www.elabscience.com).

**Focus on your research  
 Service for life science**

Applications:WB-Western Blot IHC-Immunohistochemistry IF-Immunofluorescence IP-Immunoprecipitation FC-Flow cytometry ChIP-Chromatin Immunoprecipitation Reactivity: H-Human R-Rat M-Mouse Mk-Monkey Dg-Dog Ch-Chicken Hm-Hamster Rb-Rabbit Sh-Sheep Pg-Pig Z-Zebrafish X-Xenopus C-Cow.