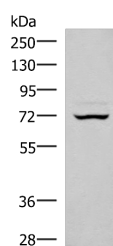


## EIF2AK1 Polyclonal Antibody

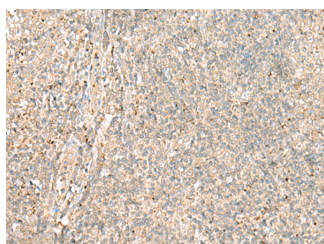
<b>Catalog No.</b>	E-AB-18852	<b>Reactivity</b>	H,M
<b>Storage</b>	Store at -20°C. Avoid freeze / thaw cycles.	<b>Host</b>	Rabbit
<b>Applications</b>	WB,IHC,ELISA	<b>Isotype</b>	IgG

**Note:** Centrifuge before opening to ensure complete recovery of vial contents.

### Images



Western blot analysis of 293T cell lysate using EIF2AK1 Polyclonal Antibody at dilution of 1:350



Immunohistochemistry of paraffin-embedded Human tonsil tissue using EIF2AK1 Polyclonal Antibody at dilution of 1:45(x200)

### Immunogen Information

<b>Immunogen</b>	Fusion protein of human EIF2AK1
<b>Gene Accession</b>	BC006524
<b>Swissprot</b>	Q9BQI3
<b>Synonyms</b>	E2AK1,Eif2ak1,Hemin-sensitive initiation factor 2-alpha kinase,HRI,KIAA1369,PRO1362

### Product Information

<b>Calculated MW</b>	71 kDa
<b>Observed MW</b>	Refer to figures
<b>Buffer</b>	PBS with 0.05% NaN3 and 40% Glycerol,pH7.4
<b>Purify</b>	Antigen affinity purification
<b>Dilution</b>	WB 1:500-1:2000, IHC 1:50-1:300, ELISA 1:5000-1:10000

### Background

The protein encoded by this gene acts at the level of translation initiation to downregulate protein synthesis in response to stress. The encoded protein is a kinase that can be inactivated by hemin. Two transcript variants encoding different isoforms have been found for this gene.

#### For Research Use Only

Thank you for your recent purchase.  
 If you would like to learn more about antibodies, please visit [www.elabscience.com](http://www.elabscience.com).

**Focus on your research  
 Service for life science**

Applications:WB-Western Blot IHC-Immunohistochemistry IF-Immunofluorescence IP-Immunoprecipitation FC-Flow cytometry ChIP-Chromatin Immunoprecipitation Reactivity: H-Human R-Rat M-Mouse Mk-Monkey Dg-Dog Ch-Chicken Hm-Hamster Rb-Rabbit Sh-Sheep Pg-Pig Z-Zebrafish X-Xenopus C-Cow.