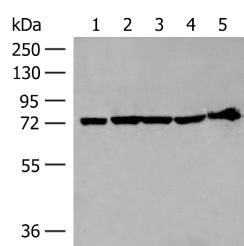


CALCOCO1 Polyclonal Antibody

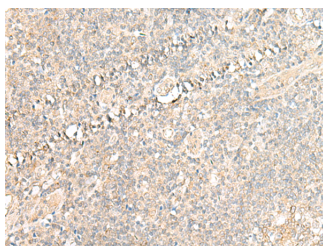
Catalog No.	E-AB-18858	Reactivity	H,M,R
Storage	Store at -20°C. Avoid freeze / thaw cycles.	Host	Rabbit
Applications	WB,IHC,ELISA	Isotype	IgG

Note: Centrifuge before opening to ensure complete recovery of vial contents.

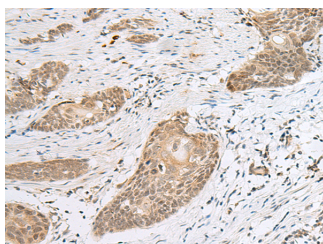
Images



Western blot analysis of 293T cell and Mouse heart tissue lysates using CALCOCO1 Polyclonal Antibody at dilution of 1:300



Immunohistochemistry of paraffin-embedded Human tonsil tissue using CALCOCO1 Polyclonal Antibody at dilution of 1:50(×200)



Immunohistochemistry of paraffin-embedded Human esophagus cancer tissue using CALCOCO1 Polyclonal Antibody at dilution of 1:50(×200)

Immunogen Information

Immunogen	Fusion protein of human CALCOCO1
Gene Accession	BC003177
Swissprot	Q9P1Z2
Synonyms	CALCOCO1, Calphoglin, Inorganic pyrophosphatase activator, KIAA1536, PP13275

Product Information

Calculated MW	77 kDa
Observed MW	Refer to figures
Buffer	PBS with 0.05% NaN ₃ and 40% Glycerol, pH7.4
Purify	Antigen affinity purification
Dilution	WB 1:500-1:2000, IHC 1:40-1:200, ELISA 1:5000-1:10000

Background

CALCOCO1 (calcium-binding and coiled-coil domain-containing protein 1), also known as cocoa, calphoglin, sarcoma antigen NY-SAR-3 or coiled-coil coactivator protein, is a 691 amino acid protein that shuttles between the cytoplasm and nucleus and functions as coactivator for aryl hydrocarbon and nuclear receptors. A member of the CALCOCO family, CALCOCO1 forms a calphoglin complex with PPA1 and PGM 1 and contains multiple functional domains through which it acts as a component of both the androgen signaling pathway and the Wnt/β-catenin signaling pathway. CALCOCO1 exists as three alternatively spliced isoforms (termed Q9P1Z2-1, 2 and 3), which are encoded by genes mapping to human chromosome 12q13.13 and mouse chromosome 15 F3.

For Research Use Only

Thank you for your recent purchase.
 If you would like to learn more about antibodies, please visit www.elabscience.com.

**Focus on your research
 Service for life science**

Applications: WB-Western Blot IHC-Immunohistochemistry IF-Immunofluorescence IP-Immunoprecipitation FC-Flow cytometry ChIP-Chromatin Immunoprecipitation Reactivity: H-Human R-Rat M-Mouse Mk-Monkey Dg-Dog Ch-Chicken Hm-Hamster Rb-Rabbit Sh-Sheep Pg-Pig Z-Zebrafish X-Xenopus C-Cow.