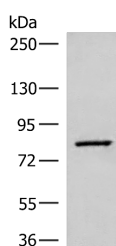


SLC26A3 Polyclonal Antibody

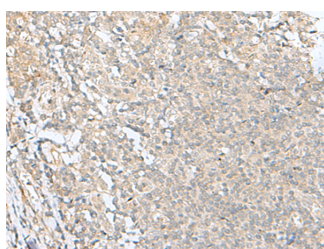
Catalog No.	E-AB-18861	Reactivity	H,M,R
Storage	Store at -20°C. Avoid freeze / thaw cycles.	Host	Rabbit
Applications	WB,IHC,ELISA	Isotype	IgG

Note: Centrifuge before opening to ensure complete recovery of vial contents.

Images



Western blot analysis of Human hepatocellular carcinoma tissue lysate using SLC26A3 Polyclonal Antibody at dilution of 1:250



Immunohistochemistry of paraffin-embedded Human tonsil tissue using SLC26A3 Polyclonal Antibody at dilution of 1:35(×200)

Immunogen Information

Immunogen	Fusion protein of human SLC26A3
Gene Accession	BC025671
Swissprot	P40879
Synonyms	Chloride anion exchanger,CLD,Down-regulated in adenoma,DRA,Protein DRA,S26A3,SLC26A3

Product Information

Calculated MW	85 kDa
Observed MW	Refer to figures
Buffer	PBS with 0.05% NaN ₃ and 40% Glycerol,pH7.4
Purify	Antigen affinity purification
Dilution	WB 1:500-1:2000, IHC 1:30-1:150, ELISA 1:5000-1:10000

Background

The protein encoded by this gene is a transmembrane glycoprotein that transports chloride ions across the cell membrane in exchange for bicarbonate ions. It is localized to the mucosa of the lower intestinal tract, particularly to the apical membrane of columnar epithelium and some goblet cells. The protein is essential for intestinal chloride absorption, and mutations in this gene have been associated with congenital chloride diarrhea.SLC26A3 (Solute Carrier Family 26 Member 3) is a Protein Coding gene. Diseases associated with SLC26A3 include Diarrhea 1, Secretory Chloride, Congenital and Congenital Chloride Diarrhea. Among its related pathways are Transport of glucose and other sugars, bile salts and organic acids, metal ions and amine compounds and Pancreatic secretion. GO annotations related to this gene include transcription factor activity, sequence-specific DNA binding and transcription cofactor activity. An important paralog of this gene is SLC26A4.

For Research Use Only

Thank you for your recent purchase.
 If you would like to learn more about antibodies, please visit www.elabscience.com.

**Focus on your research
 Service for life science**

Applications:WB-Western Blot IHC-Immunohistochemistry IF-Immunofluorescence IP-Immunoprecipitation FC-Flow cytometry ChIP-Chromatin Immunoprecipitation Reactivity: H-Human R-Rat M-Mouse Mk-Monkey Dg-Dog Ch-Chicken Hm-Hamster Rb-Rabbit Sh-Sheep Pg-Pig Z-Zebrafish X-Xenopus C-Cow.