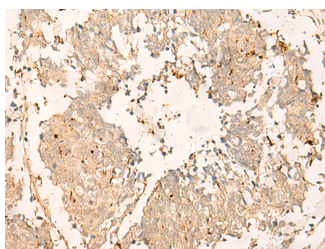


TEX11 Polyclonal Antibody

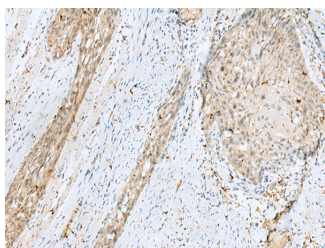
Catalog No.	E-AB-18865	Reactivity	H
Storage	Store at -20°C. Avoid freeze / thaw cycles.	Host	Rabbit
Applications	IHC,ELISA	Isotype	IgG

Note: Centrifuge before opening to ensure complete recovery of vial contents.

Images



Immunohistochemistry of paraffin-embedded Human lung cancer tissue using TEX11 Polyclonal Antibody at dilution of 1:30(×200)



Immunohistochemistry of paraffin-embedded Human esophagus cancer tissue using TEX11 Polyclonal Antibody at dilution of 1:30(×200)

Immunogen Information

Immunogen	Fusion protein of human TEX11
Gene Accession	BC036016
Swissprot	Q8IYF3
Synonyms	RGD1560239,Testis expressed 11,Testis expressed gene 11,Testis expressed sequence 11,Testis-expressed sequence 11 protein,TEX11,TGC1,TSGA3

Product Information

Buffer	PBS with 0.05% NaN3 and 40% Glycerol,pH7.4
Purify	Antigen affinity purification
Dilution	IHC 1:30-1:150, ELISA 1:5000-1:10000

Background

This gene is X-linked and is expressed in only male germ cells. Two alternatively spliced transcript variants encoding distinct isoforms have been found for this gene.

For Research Use Only

Thank you for your recent purchase.
 If you would like to learn more about antibodies, please visit www.elabscience.com.

**Focus on your research
 Service for life science**

Applications:WB-Western Blot IHC-Immunohistochemistry IF-Immunofluorescence IP-Immunoprecipitation FC-Flow cytometry ChIP-Chromatin Immunoprecipitation Reactivity: H-Human R-Rat M-Mouse Mk-Monkey Dg-Dog Ch-Chicken Hm-Hamster Rb-Rabbit Sh-Sheep Pg-Pig Z-Zebrafish X-Xenopus C-Cow.