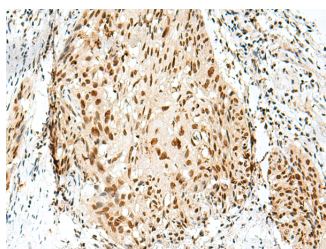


## RBM10 Polyclonal Antibody

|                     |   |                   |        |
|---------------------|---|-------------------|--------|
| <b>Catalog No.</b>  | E-AB-18868                                  | <b>Reactivity</b> | H,M,R  |
| <b>Storage</b>      | Store at -20°C. Avoid freeze / thaw cycles. | <b>Host</b>       | Rabbit |
| <b>Applications</b> | IHC,ELISA                                   | <b>Isotype</b>    | IgG    |

**Note:** Centrifuge before opening to ensure complete recovery of vial contents.

### Images



Immunohistochemistry of paraffin-embedded Human esophagus cancer tissue using RBM10 Polyclonal Antibody at dilution of 1:55(×200)

### Immunogen Information

|                       |   |
|-----------------------|---|
| <b>Immunogen</b>      | Fusion protein of human RBM10   |
| <b>Gene Accession</b> | BC004181  |
| <b>Swissprot</b>      | P98175  |
| <b>Synonyms</b>       | GPATC9,GPATCH9,HGNC9896,KIAA0122,MGC1132,MGC997,Rbm10,RBM10,S1-1,TARPS,ZRANB5 |

### Product Information

|                 |  |
|-----------------|--|
| <b>Buffer</b>   | PBS with 0.05% NaN3 and 40% Glycerol,pH7.4 |
| <b>Purify</b>   | Antigen affinity purification              |
| <b>Dilution</b> | IHC 1:50-1:300, ELISA 1:5000-1:10000       |

### Background

This gene encodes a nuclear protein that belongs to a family proteins that contain an RNA-binding motif. The encoded protein associates with hnRNP proteins and may be involved in regulating alternative splicing. Defects in this gene are the cause of the X-linked recessive disorder, TARP syndrome. Alternate splicing results in multiple transcript variants.

#### For Research Use Only

Thank you for your recent purchase.  
 If you would like to learn more about antibodies, please visit [www.elabscience.com](http://www.elabscience.com).

**Focus on your research  
 Service for life science**

Applications:WB-Western Blot IHC-Immunohistochemistry IF-Immunofluorescence IP-Immunoprecipitation FC-Flow cytometry ChIP-Chromatin Immunoprecipitation Reactivity: H-Human R-Rat M-Mouse Mk-Monkey Dg-Dog Ch-Chicken Hm-Hamster Rb-Rabbit Sh-Sheep Pg-Pig Z-Zebrafish X-Xenopus C-Cow.