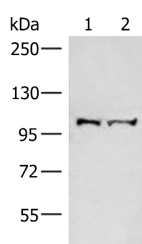


EFTUD2 Polyclonal Antibody

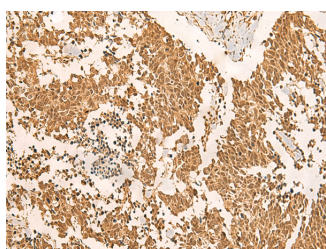
Catalog No.	E-AB-18874	Reactivity	H,M
Storage	Store at -20°C. Avoid freeze / thaw cycles.	Host	Rabbit
Applications	WB,IHC,ELISA	Isotype	IgG

Note: Centrifuge before opening to ensure complete recovery of vial contents.

Images



Western blot analysis of Mouse brain tissue and Jurkat cell lysates using EFTUD2 Polyclonal Antibody at dilution of 1:550



Immunohistochemistry of paraffin-embedded Human lung cancer tissue using EFTUD2 Polyclonal Antibody at dilution of 1:45(×200)

Immunogen Information

Immunogen	Fusion protein of human EFTUD2
Gene Accession	BC002360
Swissprot	Q15029
Synonyms	116 kDa,EFTUD2,hSNU114,MFDGA,MFDM,SNRN P116,Snrp116,Snu114,SNU114 homolog

Product Information

Calculated MW	109 kDa
Observed MW	Refer to figures
Buffer	PBS with 0.05% NaN3 and 40% Glycerol,pH7.4
Purify	Antigen affinity purification
Dilution	WB 1:500-1:2000, IHC 1:50-1:300, ELISA 1:5000-1:10000

Background

This gene encodes a GTPase which is a component of the spliceosome complex which processes precursor mRNAs to produce mature mRNAs. Mutations in this gene are associated with mandibulofacial dysostosis with microcephaly. Multiple transcript variants encoding different isoforms have been found for this gene.

For Research Use Only

Thank you for your recent purchase.
 If you would like to learn more about antibodies, please visit www.elabscience.com.

**Focus on your research
 Service for life science**

Applications:WB-Western Blot IHC-Immunohistochemistry IF-Immunofluorescence IP-Immunoprecipitation FC-Flow cytometry ChIP-Chromatin Immunoprecipitation Reactivity: H-Human R-Rat M-Mouse Mk-Monkey Dg-Dog Ch-Chicken Hm-Hamster Rb-Rabbit Sh-Sheep Pg-Pig Z-Zebrafish X-Xenopus C-Cow.