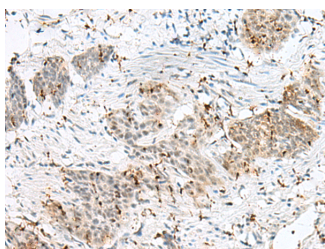


PLCL2 Polyclonal Antibody

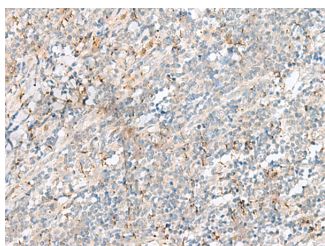
| | | | |
|---------------------|---|-------------------|--------|
| Catalog No. | E-AB-18878 | Reactivity | H,M |
| Storage | Store at -20°C. Avoid freeze / thaw cycles. | Host | Rabbit |
| Applications | IHC,ELISA | Isotype | IgG |

Note: Centrifuge before opening to ensure complete recovery of vial contents.

Images



Immunohistochemistry of paraffin-embedded Human esophagus cancer tissue using PLCL2 Polyclonal Antibody at dilution of 1:50(×200)



Immunohistochemistry of paraffin-embedded Human tonsil tissue using PLCL2 Polyclonal Antibody at dilution of 1:50(×200)

Immunogen Information

| | |
|-----------------------|---|
| Immunogen | Fusion protein of human PLCL2 |
| Gene Accession | BC036392 |
| Swissprot | Q9UPR0 |
| Synonyms | FLJ13484,PLC epsilon 2,PLC L(2),PLC L2,PLC-epsilon-2,PLCE2,PLCL 2,PLCL2,PLCL2 |

Product Information

| | |
|-----------------|--|
| Buffer | PBS with 0.05% NaN ₃ and 40% Glycerol,pH7.4 |
| Purify | Antigen affinity purification |
| Dilution | IHC 1:25-1:100, ELISA 1:5000-1:10000 |

Background

May play an role in the regulation of Ins(1,4,5)P₃ around the endoplasmic reticulum.

For Research Use Only

Thank you for your recent purchase.
 If you would like to learn more about antibodies,please visit www.elabscience.com.

**Focus on your research
 Service for life science**

Applications:WB-Western Blot IHC-Immunohistochemistry IF-Immunofluorescence IP-Immunoprecipitation FC-Flow cytometry ChIP-Chromatin Immunoprecipitation Reactivity: H-Human R-Rat M-Mouse Mk-Monkey Dg-Dog Ch-Chicken Hm-Hamster Rb-Rabbit Sh-Sheep Pg-Pig Z-Zebrafish X-Xenopus C-Cow.