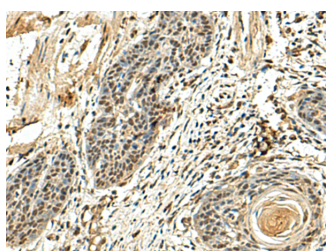


NUTF2 Polyclonal Antibody

Catalog No.	E-AB-18888	Reactivity	H,M,R
Storage	Store at -20°C. Avoid freeze / thaw cycles.	Host	Rabbit
Applications	IHC,ELISA	Isotype	IgG

Note: Centrifuge before opening to ensure complete recovery of vial contents.

Images



Immunohistochemistry of paraffin-embedded Human esophagus cancer tissue using NUTF2 Polyclonal Antibody at dilution of 1:110(×200)

Immunogen Information

Immunogen	Fusion protein of human NUTF2
Gene Accession	BC002348
Swissprot	P61970
Synonyms	NUTF2,NTF2,Nuclear transport factor 2,NTF-2,Placental protein 15,PP15

Product Information

Buffer	PBS with 0.05% NaN ₃ and 40% Glycerol,pH7.4
Purify	Antigen affinity purification
Dilution	IHC 1:100-1:300, ELISA 1:5000-1:10000

Background

NUTF2 (nuclear transport factor 2),also named as NTF2,is a cytosolic protein responsible for nuclear import of Ran,a small Ras-like GTPase involved in a number of critical cellular processes,including cell cycle regulation,chromatin organization during mitosis,reformation of the nuclear envelope following mitosis,and controlling the directionality of nucleocytoplasmic transport. Nucleocytoplasmic translocation of NTF2 is regulated in mammalian cells,and may involve a tyrosine and/or threonine kinase-dependent signal transduction mechanism(s) . The MW of this protein is 14 kDa,and this antibody specially recognises the 14 kDa protein.

For Research Use Only

Thank you for your recent purchase.
 If you would like to learn more about antibodies,please visit www.elabscience.com.

**Focus on your research
 Service for life science**

Applications:WB-Western Blot IHC-Immunohistochemistry IF-Immunofluorescence IP-Immunoprecipitation FC-Flow cytometry ChIP-Chromatin Immunoprecipitation Reactivity: H-Human R-Rat M-Mouse Mk-Monkey Dg-Dog Ch-Chicken Hm-Hamster Rb-Rabbit Sh-Sheep Pg-Pig Z-Zebrafish X-Xenopus C-Cow.