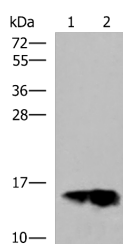


GOLGA7 Polyclonal Antibody

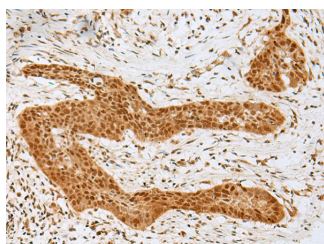
Catalog No.	E-AB-18893	Reactivity	H,M,R
Storage	Store at -20°C. Avoid freeze / thaw cycles.	Host	Rabbit
Applications	WB,IHC,ELISA	Isotype	IgG

Note: Centrifuge before opening to ensure complete recovery of vial contents.

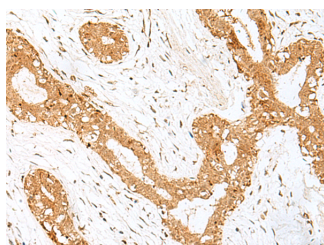
Images



Western blot analysis of Human plasma solution and Human placenta tissue lysates using GOLGA7 Polyclonal Antibody at dilution of 1:600



Immunohistochemistry of paraffin-embedded Human esophagus cancer tissue using GOLGA7 Polyclonal Antibody at dilution of 1:40(×200)



Immunohistochemistry of paraffin-embedded Human breast cancer tissue using GOLGA7 Polyclonal Antibody at dilution of 1:40(×200)

Immunogen Information

Immunogen	Fusion protein of human GOLGA7
Gene Accession	BC012032
Swissprot	Q7Z5G4
Synonyms	Golgin A7,GCP16,GOLGA3AP1,HSPC041,Golgin Subfamily A Member 7

Product Information

Calculated MW	16 kDa
Observed MW	Refer to figures
Buffer	PBS with 0.05% NaN ₃ and 40% Glycerol,pH7.4
Purify	Antigen affinity purification
Dilution	WB 1:1000-1:5000, IHC 1:50-1:300, ELISA 1:5000-1:10000

Background

GOLGA7 (Golgin A7) is a Protein Coding gene. Among its related pathways are Innate Immune System. An important paralog of this gene is GOLGA7B.

For Research Use Only

Thank you for your recent purchase.
 If you would like to learn more about antibodies, please visit www.elabscience.com.

**Focus on your research
 Service for life science**

Applications:WB-Western Blot IHC-Immunohistochemistry IF-Immunofluorescence IP-Immunoprecipitation FC-Flow cytometry ChIP-Chromatin Immunoprecipitation Reactivity: H-Human R-Rat M-Mouse Mk-Monkey Dg-Dog Ch-Chicken Hm-Hamster Rb-Rabbit Sh-Sheep Pg-Pig Z-Zebrafish X-Xenopus C-Cow.