

## GSKIP Polyclonal Antibody

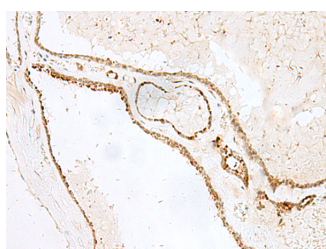
<b>Catalog No.</b>	E-AB-18894	<b>Reactivity</b>	H,M,R
<b>Storage</b>	Store at -20°C. Avoid freeze / thaw cycles.	<b>Host</b>	Rabbit
<b>Applications</b>	IHC,ELISA	<b>Isotype</b>	IgG

**Note:** Centrifuge before opening to ensure complete recovery of vial contents.

### Images



Immunohistochemistry of paraffin-embedded Human tonsil tissue using GSKIP Polyclonal Antibody at dilution of 1:55(×200)



Immunohistochemistry of paraffin-embedded Human thyroid cancer tissue using GSKIP Polyclonal Antibody at dilution of 1:55(×200)

### Immunogen Information

<b>Immunogen</b>	Fusion protein of human GSKIP
<b>Gene Accession</b>	BC004818
<b>Swissprot</b>	Q9P0R6
<b>Synonyms</b>	C14ORF129,Chromosome 14 open reading frame 129 ,GSK3-beta interaction protein,GSK3beta interaction protein,GSKIP,GSKIP,MGC4945,UPF0279

### Product Information

<b>Buffer</b>	PBS with 0.05% NaN <sub>3</sub> and 40% Glycerol,pH7.4
<b>Purify</b>	Antigen affinity purification
<b>Dilution</b>	IHC 1:40-1:200, ELISA 1:5000-1:10000

### Background

This gene encodes a protein that is involved as a negative regulator of GSK3-beta in the Wnt signaling pathway. The encoded protein may play a role in the retinoic acid signaling pathway by regulating the functional interactions between GSK3-beta, beta-catenin and cyclin D1, and it regulates the beta-catenin/N-cadherin pool. The encoded protein contains a GSK3-beta interacting domain (GID) in its C-terminus, which is similar to the GID of Axin. The protein also contains an evolutionarily conserved RII-binding domain, which facilitates binding with protein kinase-A and GSK3-beta, enabling its role as an A-kinase anchoring protein. Alternatively spliced transcript variants have been observed for this gene.

#### For Research Use Only

Thank you for your recent purchase.  
 If you would like to learn more about antibodies, please visit [www.elabscience.com](http://www.elabscience.com).

**Focus on your research  
 Service for life science**

Applications:WB-Western Blot IHC-Immunohistochemistry IF-Immunofluorescence IP-Immunoprecipitation FC-Flow cytometry ChIP-Chromatin Immunoprecipitation Reactivity: H-Human R-Rat M-Mouse Mk-Monkey Dg-Dog Ch-Chicken Hm-Hamster Rb-Rabbit Sh-Sheep Pg-Pig Z-Zebrafish X-Xenopus C-Cow.