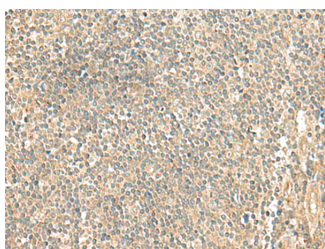


## LMO3 Polyclonal Antibody

<b>Catalog No.</b>	E-AB-18896	<b>Reactivity</b>	H,M,R
<b>Storage</b>	Store at -20°C. Avoid freeze / thaw cycles.	<b>Host</b>	Rabbit
<b>Applications</b>	IHC,ELISA	<b>Isotype</b>	IgG

**Note:** Centrifuge before opening to ensure complete recovery of vial contents.

### Images



Immunohistochemistry of paraffin-embedded Human tonsil tissue using LMO3 Polyclonal Antibody at dilution of 1:50(×200)

### Immunogen Information

<b>Immunogen</b>	Fusion protein of human LMO3
<b>Gene Accession</b>	BC026311
<b>Swissprot</b>	Q8TAP4
<b>Synonyms</b>	LMO3,RBTN3,RBTNL2,RHOM3,LIM domain only protein 3,LMO-3,Neuronal-specific transcription factor DAT1,Rhombotin-3

### Product Information

<b>Buffer</b>	PBS with 0.05% NaN3 and 40% Glycerol,pH7.4
<b>Purify</b>	Antigen affinity purification
<b>Dilution</b>	IHC 1:50-1:300, ELISA 1:5000-1:10000

### Background

The protein encoded by this gene belongs to the rhombotin family of cysteine-rich LIM domain oncogenes. This gene is predominantly expressed in the brain. Related family members, LMO1 and LMO2 on chromosome 11, have been reported to be involved in chromosomal translocations in T-cell leukemia. Many alternatively spliced transcript variants have been found for this gene.LMO3 (LIM Domain Only 3) is a Protein Coding gene. An important paralog of this gene is LMO1.

#### For Research Use Only

Thank you for your recent purchase.  
 If you would like to learn more about antibodies, please visit [www.elabscience.com](http://www.elabscience.com).

**Focus on your research  
 Service for life science**

Applications:WB-Western Blot IHC-Immunohistochemistry IF-Immunofluorescence IP-Immunoprecipitation FC-Flow cytometry ChIP-Chromatin Immunoprecipitation Reactivity: H-Human R-Rat M-Mouse Mk-Monkey Dg-Dog Ch-Chicken Hm-Hamster Rb-Rabbit Sh-Sheep Pg-Pig Z-Zebrafish X-Xenopus C-Cow.