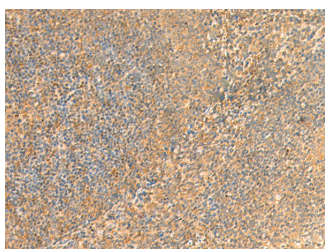


## UBD Polyclonal Antibody

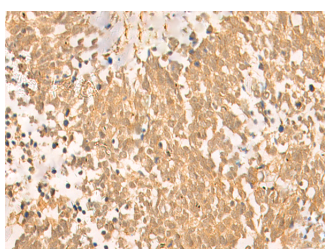
<b>Catalog No.</b>	E-AB-18910	<b>Reactivity</b>	H
<b>Storage</b>	Store at -20°C. Avoid freeze / thaw cycles.	<b>Host</b>	Rabbit
<b>Applications</b>	IHC,ELISA	<b>Isotype</b>	IgG

**Note:** Centrifuge before opening to ensure complete recovery of vial contents.

### Images



Immunohistochemistry of paraffin-embedded Human tonsil tissue using UBD Polyclonal Antibody at dilution of 1:50(×200)



Immunohistochemistry of paraffin-embedded Human lung cancer tissue using UBD Polyclonal Antibody at dilution of 1:50(×200)

### Immunogen Information

<b>Immunogen</b>	Fusion protein of human UBD
<b>Gene Accession</b>	BC012472
<b>Swissprot</b>	O15205
<b>Synonyms</b>	Diubiquitin,FAT10,GABBR1,UBD 3,Ubd,UBD,Ubiquitin D,Ubiquitin like protein FAT10,Ubiquitin-like protein FAT10

### Product Information

<b>Buffer</b>	PBS with 0.05% NaN <sub>3</sub> and 40% Glycerol,pH7.4
<b>Purify</b>	Antigen affinity purification
<b>Dilution</b>	IHC 1:50-1:300, ELISA 1:5000-1:10000

### Background

UBD (Ubiquitin D) is a Protein Coding gene. Diseases associated with UBD include Hepatocellular Carcinoma. Among its related pathways are TRAF Pathway and fMLP Pathway. GO annotations related to this gene include proteasome binding. An important paralog of this gene is UBB.

#### For Research Use Only

Thank you for your recent purchase.  
 If you would like to learn more about antibodies, please visit [www.elabscience.com](http://www.elabscience.com).

**Focus on your research  
 Service for life science**

Applications:WB-Western Blot IHC-Immunohistochemistry IF-Immunofluorescence IP-Immunoprecipitation FC-Flow cytometry ChIP-  
 Chromatin Immunoprecipitation Reactivity: H-Human R-Rat M-Mouse Mk-Monkey Dg-Dog Ch-Chicken Hm-Hamster Rb-Rabbit Sh-  
 Sheep Pg-Pig Z-Zebrafish X-Xenopus C-Cow.