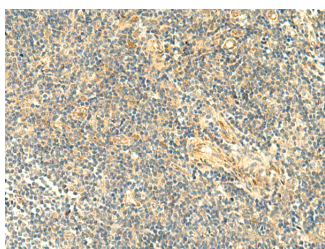


ASB6 Polyclonal Antibody

Catalog No.	E-AB-18933	Reactivity	H,M
Storage	Store at -20°C. Avoid freeze / thaw cycles.	Host	Rabbit
Applications	IHC,ELISA	Isotype	IgG

Note: Centrifuge before opening to ensure complete recovery of vial contents.

Images



Immunohistochemistry of paraffin-embedded Human tonsil tissue using ASB6 Polyclonal Antibody at dilution of 1:50(×200)

Immunogen Information

Immunogen	Fusion protein of human ASB6
Gene Accession	BC001719
Swissprot	Q9NWX5
Synonyms	Ankyrin repeat and SOCS box containing 6,Ankyrin repeat and SOCS box protein 6,ASB 6,ASB-6,ASB6,ASB6,FLJ20548,MGC1024

Product Information

Buffer	PBS with 0.05% NaN3 and 40% Glycerol,pH7.4
Purify	Antigen affinity purification
Dilution	IHC 1:50-1:300, ELISA 1:5000-1:10000

Background

The protein encoded by this gene belongs to a family of ankyrin repeat proteins that, along with four other protein families, contain a C-terminal SOCS box motif. Growing evidence suggests that the SOCS box, similar to the F-box, acts as a bridge between specific substrate-binding domains and the more generic proteins that comprise a large family of E3 ubiquitin protein ligases. Alternatively spliced transcript variants have been identified for this gene.

For Research Use Only

Thank you for your recent purchase.
 If you would like to learn more about antibodies, please visit www.elabscience.com.

**Focus on your research
 Service for life science**

Applications:WB-Western Blot IHC-Immunohistochemistry IF-Immunofluorescence IP-Immunoprecipitation FC-Flow cytometry ChIP-Chromatin Immunoprecipitation Reactivity: H-Human R-Rat M-Mouse Mk-Monkey Dg-Dog Ch-Chicken Hm-Hamster Rb-Rabbit Sh-Sheep Pg-Pig Z-Zebrafish X-Xenopus C-Cow.