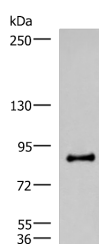


RTN1 Polyclonal Antibody

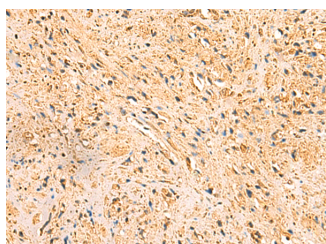
Catalog No.	E-AB-18935	Reactivity	H,M,R
Storage	Store at -20°C. Avoid freeze / thaw cycles.	Host	Rabbit
Applications	WB,IHC,ELISA	Isotype	IgG

Note: Centrifuge before opening to ensure complete recovery of vial contents.

Images



Western blot analysis of Mouse brain tissue lysate using RTN1 Polyclonal Antibody at dilution of 1:600



Immunohistochemistry of paraffin-embedded Human prostate cancer tissue using RTN1 Polyclonal Antibody at dilution of 1:50(x200)

Immunogen Information

Immunogen	Fusion protein of human RTN1
Gene Accession	BC000314
Swissprot	Q16799
Synonyms	Neuroendocrine specific protein, Neuroendocrine-specific protein, NSP, Reticulon 1, Reticulon-1, RTN1, RTN1, RTN1

Product Information

Calculated MW	84 kDa
Observed MW	Refer to figures
Buffer	PBS with 0.05% NaN ₃ and 40% Glycerol, pH 7.4
Purify	Antigen affinity purification
Dilution	WB 1:500-1:2000, IHC 1:50-1:300, ELISA 1:5000-1:10000

Background

This gene belongs to the family of reticulon encoding genes. Reticulons are associated with the endoplasmic reticulum, and are involved in neuroendocrine secretion or in membrane trafficking in neuroendocrine cells. This gene is considered to be a specific marker for neurological diseases and cancer, and is a potential molecular target for therapy. Alternative splicing results in multiple transcript variants.

For Research Use Only

Thank you for your recent purchase.
 If you would like to learn more about antibodies, please visit www.elabscience.com.

**Focus on your research
 Service for life science**

Applications: WB-Western Blot IHC-Immunohistochemistry IF-Immunofluorescence IP-Immunoprecipitation FC-Flow cytometry ChIP-Chromatin Immunoprecipitation Reactivity: H-Human R-Rat M-Mouse Mk-Monkey Dg-Dog Ch-Chicken Hm-Hamster Rb-Rabbit Sh-Sheep Pg-Pig Z-Zebrafish X-Xenopus C-Cow.