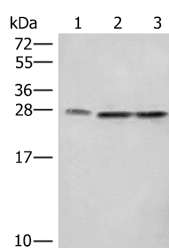


SEC22B Polyclonal Antibody

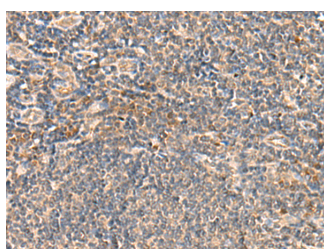
Catalog No.	E-AB-18942	Reactivity	H,M,R
Storage	Store at -20°C. Avoid freeze / thaw cycles.	Host	Rabbit
Applications	WB,IHC,ELISA	Isotype	IgG

Note: Centrifuge before opening to ensure complete recovery of vial contents.

Images



Western blot analysis of A172 LOVO and Hela cell lysates using SEC22B Polyclonal Antibody at dilution of 1:450



Immunohistochemistry of paraffin-embedded Human tonsil tissue using SEC22B Polyclonal Antibody at dilution of 1:60(×200)

Immunogen Information

Immunogen	Fusion protein of human SEC22B
Gene Accession	BC001364
Swissprot	O75396
Synonyms	SEC22B,SEC22L1,ERS24,SEC22 vesicle-trafficking protein homolog B

Product Information

Calculated MW	25 kDa
Observed MW	Refer to figures
Buffer	PBS with 0.05% NaN ₃ and 40% Glycerol,pH7.4
Purify	Antigen affinity purification
Dilution	WB 1:500-1:2000, IHC 1:50-1:300, ELISA 1:5000-1:10000

Background

The protein encoded by this gene is a member of the SEC22 family of vesicle trafficking proteins. It seems to complex with SNARE and it is thought to play a role in the ER-Golgi protein trafficking. This protein has strong similarity to Mus musculus and Cricetulus griseus proteins. SEC22B (SEC22 Homolog B, Vesicle Trafficking Protein (Gene/Pseudogene)) is a Protein Coding gene. Among its related pathways are Transport to the Golgi and subsequent modification and Innate Immune System. GO annotations related to this gene include syntaxin binding. An important paralog of this gene is SEC22A.

For Research Use Only

Thank you for your recent purchase.
 If you would like to learn more about antibodies, please visit www.elabscience.com.

**Focus on your research
 Service for life science**

Applications:WB-Western Blot IHC-Immunohistochemistry IF-Immunofluorescence IP-Immunoprecipitation FC-Flow cytometry ChIP-Chromatin Immunoprecipitation Reactivity: H-Human R-Rat M-Mouse Mk-Monkey Dg-Dog Ch-Chicken Hm-Hamster Rb-Rabbit Sh-Sheep Pg-Pig Z-Zebrafish X-Xenopus C-Cow.