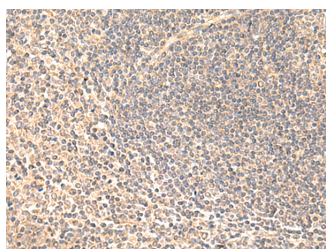


## SULT4A1 Polyclonal Antibody

<b>Catalog No.</b>	E-AB-18956	<b>Reactivity</b>	H,M,R
<b>Storage</b>	Store at -20°C. Avoid freeze / thaw cycles.	<b>Host</b>	Rabbit
<b>Applications</b>	IHC,ELISA	<b>Isotype</b>	IgG

**Note:** Centrifuge before opening to ensure complete recovery of vial contents.

### Images



Immunohistochemistry of paraffin-embedded Human tonsil tissue using SULT4A1 Polyclonal Antibody at dilution of 1:65(×200)

### Immunogen Information

<b>Immunogen</b>	Fusion protein of human SULT4A1
<b>Gene Accession</b>	BC028171
<b>Swissprot</b>	Q9BR01
<b>Synonyms</b>	BR STL 1, BRSTL1, DJ388M5.3, hBR STL 1, hBR STL, hBR-STL, hBR-STL-1, MGC40032

### Product Information

<b>Buffer</b>	PBS with 0.05% NaN <sub>3</sub> and 40% Glycerol, pH7.4
<b>Purify</b>	Antigen affinity purification
<b>Dilution</b>	IHC 1:50-1:300, ELISA 1:5000-1:10000

### Background

SULT4A1, also named as SULTX3, NST, ST4A1, hBR-STL and hBR-STL-1, belongs to the sulfotransferase 1 family. It may catalyze the sulfate conjugation of many drugs, xenobiotic compounds, hormones, and neurotransmitters. SULT4A1 displays activity towards L-triiodothyronine, thyroxine, estrone, p-nitrophenol, 2-naphtylamine, and 2-naphtol. It may have a role in the sulfation of drugs and neurotransmitters in the CNS. SULT4A1 is a brain-specific sulfotransferase believed to be involved in the metabolism of neurotransmitters. It is a novel cytosolic sulfotransferase that is primarily expressed in the brain.

#### For Research Use Only

Thank you for your recent purchase.  
 If you would like to learn more about antibodies, please visit [www.elabscience.com](http://www.elabscience.com).

**Focus on your research  
 Service for life science**

Applications: WB-Western Blot IHC-Immunohistochemistry IF-Immunofluorescence IP-Immunoprecipitation FC-Flow cytometry ChIP-Chromatin Immunoprecipitation Reactivity: H-Human R-Rat M-Mouse Mk-Monkey Dg-Dog Ch-Chicken Hm-Hamster Rb-Rabbit Sh-Sheep Pg-Pig Z-Zebrafish X-Xenopus C-Cow.