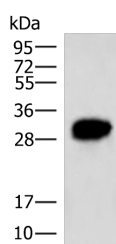


## HCCS Polyclonal Antibody

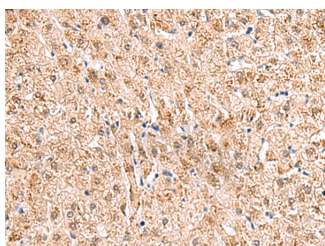
<b>Catalog No.</b>	E-AB-18958	<b>Reactivity</b>	H,M
<b>Storage</b>	Store at -20°C. Avoid freeze / thaw cycles.	<b>Host</b>	Rabbit
<b>Applications</b>	WB,IHC,ELISA	<b>Isotype</b>	IgG

**Note:** Centrifuge before opening to ensure complete recovery of vial contents.

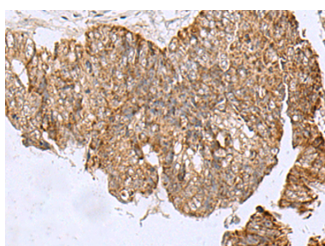
### Images



Western blot analysis of HepG2 cell lysate using HCCS Polyclonal Antibody at dilution of 1:4000



Immunohistochemistry of paraffin-embedded Human liver cancer tissue using HCCS Polyclonal Antibody at dilution of 1:110(x200)



Immunohistochemistry of paraffin-embedded Human colorectal cancer tissue using HCCS Polyclonal Antibody at dilution of 1:110(x200)

### Immunogen Information

<b>Immunogen</b>	Fusion protein of human HCCS
<b>Gene Accession</b>	BC001691
<b>Swissprot</b>	P53701
<b>Synonyms</b>	CCHL,CCHL,Hccs,Holocytochrome c-type synthase,MCOPS7,RGD1563855,RP23-37L2.1

### Product Information

<b>Calculated MW</b>	31 kDa
<b>Observed MW</b>	Refer to figures
<b>Buffer</b>	PBS with 0.05% NaN3 and 40% Glycerol,pH7.4
<b>Purify</b>	Antigen affinity purification
<b>Dilution</b>	WB 1:5000-1:10000, IHC 1:50-1:300, ELISA 1:5000-1:10000

### Background

The protein encoded by this gene is an enzyme that covalently links a heme group to the apoprotein of cytochrome c. Defects in this gene are a cause of microphthalmia syndromic type 7 (MCOPS7). Three transcript variants encoding the same protein have been found for this gene.

#### For Research Use Only

Thank you for your recent purchase.  
 If you would like to learn more about antibodies, please visit [www.elabscience.com](http://www.elabscience.com).

**Focus on your research**  
**Service for life science**

Applications:WB-Western Blot IHC-Immunohistochemistry IF-Immunofluorescence IP-Immunoprecipitation FC-Flow cytometry ChIP-Chromatin Immunoprecipitation Reactivity: H-Human R-Rat M-Mouse Mk-Monkey Dg-Dog Ch-Chicken Hm-Hamster Rb-Rabbit Sh-Sheep Pg-Pig Z-Zebrafish X-Xenopus C-Cow.