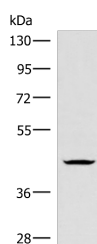


HMBOX1 Polyclonal Antibody

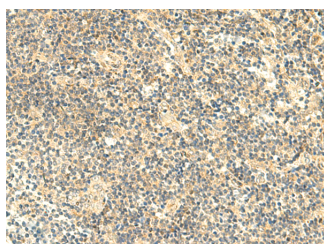
Catalog No.	E-AB-18967	Reactivity	H,M
Storage	Store at -20°C. Avoid freeze / thaw cycles.	Host	Rabbit
Applications	WB,IHC,ELISA	Isotype	IgG

Note: Centrifuge before opening to ensure complete recovery of vial contents.

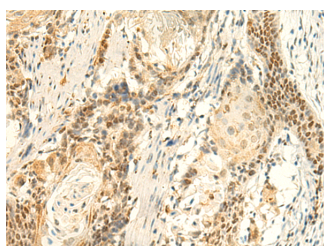
Images



Western blot analysis of Jurkat cell lysate using HMBOX1 Polyclonal Antibody at dilution of 1:300



Immunohistochemistry of paraffin-embedded Human tonsil tissue using HMBOX1 Polyclonal Antibody at dilution of 1:50(×200)



Immunohistochemistry of paraffin-embedded Human esophagus cancer tissue using HMBOX1 Polyclonal Antibody at dilution of 1:50(×200)

Immunogen Information

Immunogen	Fusion protein of human HMBOX1
Gene Accession	BC009259
Swissprot	Q6NT76
Synonyms	FLJ21616,HMBOX1,HMBOX1A,HMBX1,HNF1LA, homeobox-containing protein PBHNF,PBHNF

Product Information

Calculated MW	47 kDa
Observed MW	Refer to figures
Buffer	PBS with 0.05% NaN ₃ and 40% Glycerol,pH7.4
Purify	Antigen affinity purification
Dilution	WB 1:500-1:2000, IHC 1:40-1:200, ELISA 1:5000-1:10000

Background

Transcription factor.Ubiquitous. Detected in pancreas, brain, spleen, placenta, prostate, thymus, liver, heart, bone marrow, skeletal muscle, stomach, uterus, testis, kidney, ovary, and colon.

For Research Use Only

Thank you for your recent purchase.
 If you would like to learn more about antibodies, please visit www.elabscience.com.

**Focus on your research
 Service for life science**

Applications:WB-Western Blot IHC-Immunohistochemistry IF-Immunofluorescence IP-Immunoprecipitation FC-Flow cytometry ChIP-Chromatin Immunoprecipitation Reactivity: H-Human R-Rat M-Mouse Mk-Monkey Dg-Dog Ch-Chicken Hm-Hamster Rb-Rabbit Sh-Sheep Pg-Pig Z-Zebrafish X-Xenopus C-Cow.