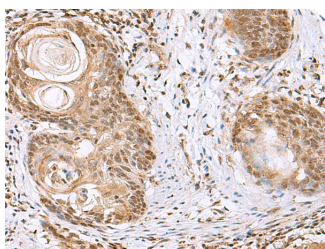


ELAC1 Polyclonal Antibody

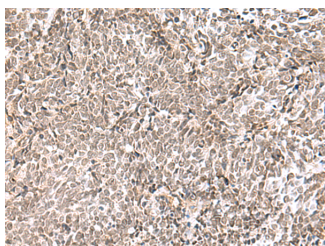
Catalog No.	E-AB-18999	Reactivity	H,M
Storage	Store at -20°C. Avoid freeze / thaw cycles.	Host	Rabbit
Applications	IHC,ELISA	Isotype	IgG

Note: Centrifuge before opening to ensure complete recovery of vial contents.

Images



Immunohistochemistry of paraffin-embedded Human esophagus cancer tissue using ELAC1 Polyclonal Antibody at dilution of 1:65(×200)



Immunohistochemistry of paraffin-embedded Human lung cancer tissue using ELAC1 Polyclonal Antibody at dilution of 1:65(×200)

Immunogen Information

Immunogen	Fusion protein of human ELAC1
Gene Accession	BC014624
Swissprot	Q9H777
Synonyms	D29,Deleted in Ma29,ELAC1,RNase Z 1,RNZ1,tRNA Z,tRNase Z 1,tRNase ZS

Product Information

Buffer	PBS with 0.05% NaN ₃ and 40% Glycerol,pH7.4
Purify	Antigen affinity purification
Dilution	IHC 1:50-1:300, ELISA 1:5000-1:10000

Background

Zinc phosphodiesterase, which displays some tRNA 3'-processing endonuclease activity. Probably involved in tRNA maturation, by removing a 3'-trailer from precursor tRNA.

For Research Use Only

Thank you for your recent purchase.
 If you would like to learn more about antibodies, please visit www.elabscience.com.

**Focus on your research
 Service for life science**

Applications:WB-Western Blot IHC-Immunohistochemistry IF-Immunofluorescence IP-Immunoprecipitation FC-Flow cytometry ChIP-Chromatin Immunoprecipitation Reactivity: H-Human R-Rat M-Mouse Mk-Monkey Dg-Dog Ch-Chicken Hm-Hamster Rb-Rabbit Sh-Sheep Pg-Pig Z-Zebrafish X-Xenopus C-Cow.