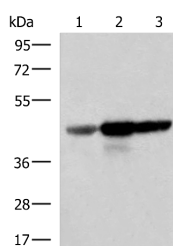


## FDFT1 Polyclonal Antibody

<b>Catalog No.</b>	E-AB-19026	<b>Reactivity</b>	H,M,R
<b>Storage</b>	Store at -20°C. Avoid freeze / thaw cycles.	<b>Host</b>	Rabbit
<b>Applications</b>	WB,ELISA	<b>Isotype</b>	IgG

**Note:** Centrifuge before opening to ensure complete recovery of vial contents.

### Images



Western blot analysis of Human fetal brain tissue HepG2 and HT29 cell lysates using FDFT1 Polyclonal Antibody at dilution of 1:1000

### Immunogen Information

<b>Immunogen</b>	Fusion protein of human FDFT1
<b>Gene Accession</b>	BC009251
<b>Swissprot</b>	P37268
<b>Synonyms</b>	DGPT,ERG9,FDFT,FDFT1,FPP:FPP farnesyltransferase,SQS,Squalene synthetase,SS

### Product Information

<b>Calculated MW</b>	48 kDa
<b>Observed MW</b>	Refer to figures
<b>Buffer</b>	PBS with 0.05% NaN <sub>3</sub> and 40% Glycerol,pH7.4
<b>Purify</b>	Antigen affinity purification
<b>Dilution</b>	WB 1:1000-1:5000, ELISA 1:5000-1:10000

### Background

This gene encodes a membrane-associated enzyme located at a branch point in the mevalonate pathway. The encoded protein is the first specific enzyme in cholesterol biosynthesis, catalyzing the dimerization of two molecules of farnesyl diphosphate in a two-step reaction to form squalene.

#### For Research Use Only

Thank you for your recent purchase.

If you would like to learn more about antibodies, please visit [www.elabscience.com](http://www.elabscience.com).

**Focus on your research  
 Service for life science**

Applications:WB-Western Blot IHC-Immunohistochemistry IF-Immunofluorescence IP-Immunoprecipitation FC-Flow cytometry ChIP-Chromatin Immunoprecipitation Reactivity: H-Human R-Rat M-Mouse Mk-Monkey Dg-Dog Ch-Chicken Hm-Hamster Rb-Rabbit Sh-Sheep Pg-Pig Z-Zebrafish X-Xenopus C-Cow.