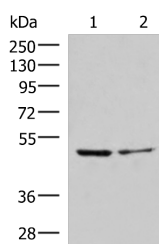


ECSIT Polyclonal Antibody

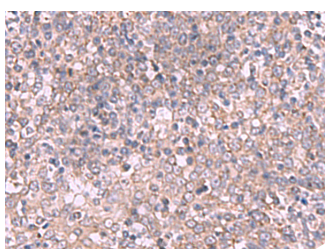
Catalog No.	E-AB-19037	Reactivity	H
Storage	Store at -20°C. Avoid freeze / thaw cycles.	Host	Rabbit
Applications	WB,IHC,ELISA	Isotype	IgG

Note: Centrifuge before opening to ensure complete recovery of vial contents.

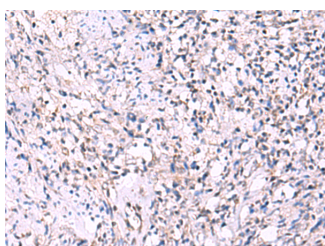
Images



Western blot analysis of Jurkat and HepG2 cell lysates using ECSIT Polyclonal Antibody at dilution of 1:1000



Immunohistochemistry of paraffin-embedded Human tonsil tissue using ECSIT Polyclonal Antibody at dilution of 1:70(×200)



Immunohistochemistry of paraffin-embedded Human cervical cancer tissue using ECSIT Polyclonal Antibody at dilution of 1:70(×200)

Immunogen Information

Immunogen	Fusion protein of human ECSIT
Gene Accession	BC000193
Swissprot	Q9BQ95
Synonyms	Ecsit,ECSIT homolog,ECSIT protein,ECSIT,SITPEC,SITPEC protein

Product Information

Calculated MW	49 kDa
Observed MW	Refer to figures
Buffer	PBS with 0.05% NaN ₃ and 40% Glycerol,pH7.4
Purify	Antigen affinity purification
Dilution	WB 1:1000-1:5000, IHC 1:50-1:300, ELISA 1:5000-1:10000

Background

Adapter protein of the Toll-like and IL-1 receptor signaling pathway that is involved in the activation of NF-kappa-B via MAP3K1. Promotes proteolytic activation of MAP3K1. Involved in the BMP signaling pathway. Required for normal embryonic development (By similarity).

For Research Use Only

Thank you for your recent purchase.
 If you would like to learn more about antibodies, please visit www.elabscience.com.

**Focus on your research
 Service for life science**

Applications:WB-Western Blot IHC-Immunohistochemistry IF-Immunofluorescence IP-Immunoprecipitation FC-Flow cytometry ChIP-Chromatin Immunoprecipitation Reactivity: H-Human R-Rat M-Mouse Mk-Monkey Dg-Dog Ch-Chicken Hm-Hamster Rb-Rabbit Sh-Sheep Pg-Pig Z-Zebrafish X-Xenopus C-Cow.