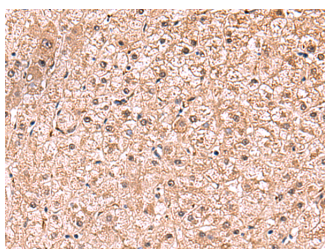


RUSC1 Polyclonal Antibody

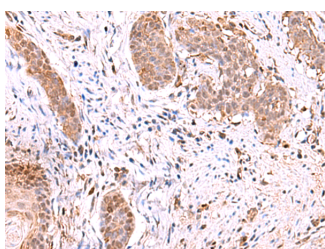
Catalog No.	E-AB-19038	Reactivity	H
Storage	Store at -20°C. Avoid freeze / thaw cycles.	Host	Rabbit
Applications	IHC,ELISA	Isotype	IgG

Note: Centrifuge before opening to ensure complete recovery of vial contents.

Images



Immunohistochemistry of paraffin-embedded Human liver cancer tissue using RUSC1 Polyclonal Antibody at dilution of 1:90(×200)



Immunohistochemistry of paraffin-embedded Human esophagus cancer tissue using RUSC1 Polyclonal Antibody at dilution of 1:90(×200)

Immunogen Information

Immunogen	Fusion protein of human RUSC1
Gene Accession	BC001045
Swissprot	Q9BVN2
Synonyms	Nesca,RUN and SH3 domain containing 1,RUN and SH3 domain containing protein 1,RUSC 1

Product Information

Buffer	PBS with 0.05% NaN ₃ and 40% Glycerol,pH7.4
Purify	Antigen affinity purification
Dilution	IHC 1:50-1:300, ELISA 1:5000-1:10000

Background

Putative signaling adapter which may play a role in neuronal differentiation. May be involved in regulation of NGF-dependent neurite outgrowth. Proposed to play a role in neuronal vesicular trafficking, specifically involving pre-synaptic membrane proteins. Seems to be involved in signaling pathways that are regulated by the prolonged activation of MAPK. Can regulate the polyubiquitination of IKBKG and thus may be involved in regulation of the NF-kappa-B pathway.

For Research Use Only

Thank you for your recent purchase.
 If you would like to learn more about antibodies, please visit www.elabscience.com.

**Focus on your research
 Service for life science**

Applications:WB-Western Blot IHC-Immunohistochemistry IF-Immunofluorescence IP-Immunoprecipitation FC-Flow cytometry ChIP-Chromatin Immunoprecipitation Reactivity: H-Human R-Rat M-Mouse Mk-Monkey Dg-Dog Ch-Chicken Hm-Hamster Rb-Rabbit Sh-Sheep Pg-Pig Z-Zebrafish X-Xenopus C-Cow.