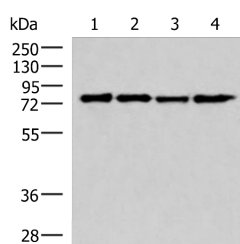


AKAP17A Polyclonal Antibody

Catalog No.	E-AB-19042	Reactivity	H
Storage	Store at -20°C. Avoid freeze / thaw cycles.	Host	Rabbit
Applications	WB,ELISA	Isotype	IgG

Note: Centrifuge before opening to ensure complete recovery of vial contents.

Images



Western blot analysis of 293T cell lysates using AKAP17A Polyclonal Antibody at dilution of 1:650

Immunogen Information

Immunogen	Fusion protein of human AKAP17A
Gene Accession	BC028151
Swissprot	Q02040
Synonyms	721P,AK17A,AKAP-17A,AKAP17A,SFRS17A,Splicing factor,XE 7,XE7

Product Information

Calculated MW	81 kDa
Observed MW	Refer to figures
Buffer	PBS with 0.05% NaN ₃ and 40% Glycerol,pH7.4
Purify	Antigen affinity purification
Dilution	WB 1:500-1:2000, ELISA 1:5000-1:10000

Background

This locus encodes a protein kinase A anchoring protein. The encoded protein is part of the spliceosome complex and is involved in the regulation of alternate splicing in some mRNA precursors. Alternatively spliced transcript variants have been identified for this gene. AKAP17A (A-Kinase Anchoring Protein 17A) is a Protein Coding gene. Diseases associated with AKAP17A include Null-Cell Leukemia and Chronic Tic Disorder. GO annotations related to this gene include poly(A) RNA binding and protein kinase A binding.

For Research Use Only

Thank you for your recent purchase.
 If you would like to learn more about antibodies, please visit www.elabscience.com.

**Focus on your research
 Service for life science**

Applications:WB-Western Blot IHC-Immunohistochemistry IF-Immunofluorescence IP-Immunoprecipitation FC-Flow cytometry ChIP-Chromatin Immunoprecipitation Reactivity: H-Human R-Rat M-Mouse Mk-Monkey Dg-Dog Ch-Chicken Hm-Hamster Rb-Rabbit Sh-Sheep Pg-Pig Z-Zebrafish X-Xenopus C-Cow.