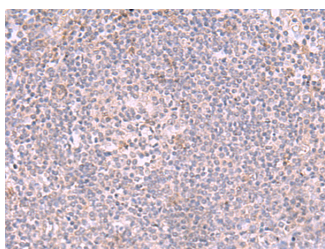


## INPP5K Polyclonal Antibody

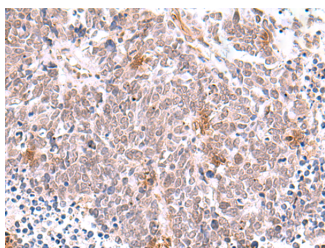
<b>Catalog No.</b>	E-AB-19044	<b>Reactivity</b>	H
<b>Storage</b>	Store at -20°C. Avoid freeze / thaw cycles.	<b>Host</b>	Rabbit
<b>Applications</b>	IHC,ELISA	<b>Isotype</b>	IgG

**Note:** Centrifuge before opening to ensure complete recovery of vial contents.

### Images



Immunohistochemistry of paraffin-embedded Human tonsil tissue using INPP5K Polyclonal Antibody at dilution of 1:90(×200)



Immunohistochemistry of paraffin-embedded Human lung cancer tissue using INPP5K Polyclonal Antibody at dilution of 1:90(×200)

### Immunogen Information

<b>Immunogen</b>	Fusion protein of human INPP5K
<b>Gene Accession</b>	BC004362
<b>Swissprot</b>	Q9BT40
<b>Synonyms</b>	INP5K,INPP5K,Skeletal muscle and kidney-enriched inositol phosphatase

### Product Information

<b>Buffer</b>	PBS with 0.05% NaN3 and 40% Glycerol,pH7.4
<b>Purify</b>	Antigen affinity purification
<b>Dilution</b>	IHC 1:50-1:300, ELISA 1:5000-1:10000

### Background

This gene encodes a protein with 5-phosphatase activity toward polyphosphate inositol. The protein localizes to the cytosol in regions lacking actin stress fibers. It is thought that this protein may negatively regulate the actin cytoskeleton. Alternatively spliced transcript variants encoding different isoforms have been identified.

#### For Research Use Only

Thank you for your recent purchase.  
 If you would like to learn more about antibodies, please visit [www.elabscience.com](http://www.elabscience.com).

**Focus on your research  
 Service for life science**

Applications:WB-Western Blot IHC-Immunohistochemistry IF-Immunofluorescence IP-Immunoprecipitation FC-Flow cytometry ChIP-Chromatin Immunoprecipitation Reactivity: H-Human R-Rat M-Mouse Mk-Monkey Dg-Dog Ch-Chicken Hm-Hamster Rb-Rabbit Sh-Sheep Pg-Pig Z-Zebrafish X-Xenopus C-Cow.