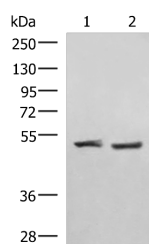


RRP8 Polyclonal Antibody

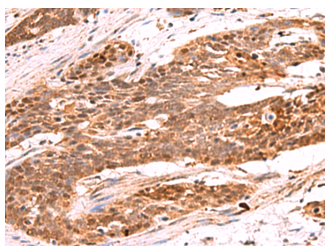
Catalog No.	E-AB-19047	Reactivity	H,M,R
Storage	Store at -20°C. Avoid freeze / thaw cycles.	Host	Rabbit
Applications	WB,IHC,ELISA	Isotype	IgG

Note: Centrifuge before opening to ensure complete recovery of vial contents.

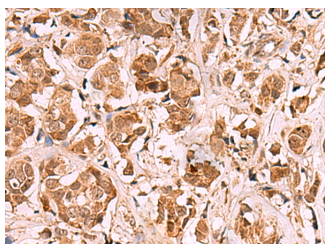
Images



Western blot analysis of Human cerebella tissue K562 cell lysates using RRP8 Polyclonal Antibody at dilution of 1:1000



Immunohistochemistry of paraffin-embedded Human esophagus cancer tissue using RRP8 Polyclonal Antibody at dilution of 1:80(×200)



Immunohistochemistry of paraffin-embedded Human breast cancer tissue using RRP8 Polyclonal Antibody at dilution of 1:80(×200)

Immunogen Information

Immunogen	Fusion protein of human RRP8
Gene Accession	BC001071
Swissprot	O43159
Synonyms	hypothetical protein LOC23378,KIAA0409,NML,RRP8,RRP8 methyltransferase homolog,RRP8

Product Information

Calculated MW	51 kDa
Observed MW	Refer to figures
Buffer	PBS with 0.05% NaN ₃ and 40% Glycerol,pH7.4
Purify	Antigen affinity purification
Dilution	WB 1:500-1:2000, IHC 1:50-1:300, ELISA 1:5000-1:10000

Background

RRP8 (Ribosomal RNA Processing 8, Methyltransferase, Homolog (Yeast)) is a Protein Coding gene. Diseases associated with RRP8 include Breast Abscess and Bowen-Conradi Syndrome. Among its related pathways are Activated PKN1 stimulates transcription of AR (androgen receptor) regulated genes KLK2 and KLK3 and Gene Expression. GO annotations related to this gene include poly(A) RNA binding and methylated histone binding.

For Research Use Only

Thank you for your recent purchase.
 If you would like to learn more about antibodies, please visit www.elabscience.com.

Focus on your research Service for life science

Applications:WB-Western Blot IHC-Immunohistochemistry IF-Immunofluorescence IP-Immunoprecipitation FC-Flow cytometry ChIP-Chromatin Immunoprecipitation Reactivity: H-Human R-Rat M-Mouse Mk-Monkey Dg-Dog Ch-Chicken Hm-Hamster Rb-Rabbit Sh-Sheep Pg-Pig Z-Zebrafish X-Xenopus C-Cow.