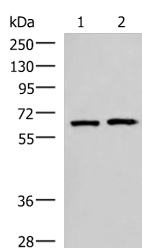


GPKOW Polyclonal Antibody

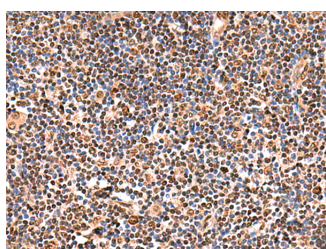
Catalog No.	E-AB-19058	Reactivity	H
Storage	Store at -20°C. Avoid freeze / thaw cycles.	Host	Rabbit
Applications	WB,IHC,ELISA	Isotype	IgG

Note: Centrifuge before opening to ensure complete recovery of vial contents.

Images



Western blot analysis of 293T and Jurkat cell lysates using GPKOW Polyclonal Antibody at dilution of 1:2000



Immunohistochemistry of paraffin-embedded Human tonsil tissue using GPKOW Polyclonal Antibody at dilution of 1:140(×200)

Immunogen Information

Immunogen	Fusion protein of human GPKOW
Gene Accession	BC000397
Swissprot	Q92917
Synonyms	GPATC5,GPATCH5,gpkow,GPKOW,Protein MOS2 homolog,Protein T54,SPP2,T54,T54 protein

Product Information

Calculated MW	53 kDa
Observed MW	Refer to figures
Buffer	PBS with 0.05% NaN ₃ and 40% Glycerol,pH7.4
Purify	Antigen affinity purification
Dilution	WB 1:1000-1:5000, IHC 1:100-1:500, ELISA 1:5000-1:10000

Background

This gene encodes a putative RNA-binding protein containing G-patch and KOW (Kyprides, Ouzounis, Woese) domains. The encoded protein interacts directly with protein kinase A and protein kinase X and is also found associated with the spliceosome.

For Research Use Only

Thank you for your recent purchase.
 If you would like to learn more about antibodies, please visit www.elabscience.com.

**Focus on your research
 Service for life science**

Applications:WB-Western Blot IHC-Immunohistochemistry IF-Immunofluorescence IP-Immunoprecipitation FC-Flow cytometry ChIP-Chromatin Immunoprecipitation Reactivity: H-Human R-Rat M-Mouse Mk-Monkey Dg-Dog Ch-Chicken Hm-Hamster Rb-Rabbit Sh-Sheep Pg-Pig Z-Zebrafish X-Xenopus C-Cow.