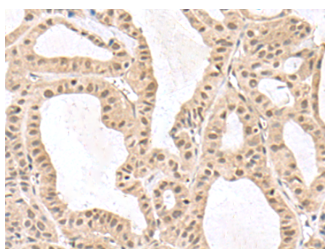


## RPS6KA5 Polyclonal Antibody

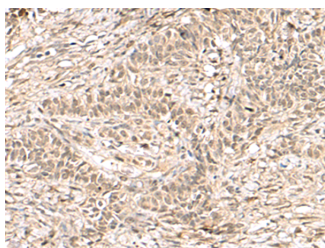
<b>Catalog No.</b>	E-AB-19071	<b>Reactivity</b>	H
<b>Storage</b>	Store at -20°C. Avoid freeze / thaw cycles.	<b>Host</b>	Rabbit
<b>Applications</b>	IHC,ELISA	<b>Isotype</b>	IgG

**Note:** Centrifuge before opening to ensure complete recovery of vial contents.

### Images



Immunohistochemistry of paraffin-embedded Human thyroid cancer tissue using RPS6KA5 Polyclonal Antibody at dilution of 1:170(×200)



Immunohistochemistry of paraffin-embedded Human ovarian cancer tissue using RPS6KA5 Polyclonal Antibody at dilution of 1:170(×200)

### Immunogen Information

<b>Immunogen</b>	Fusion protein of human RPS6KA5
<b>Gene Accession</b>	BC017187
<b>Swissprot</b>	O75582
<b>Synonyms</b>	EC 2.7.11.1,KS6A5,MGC1911,RLPK,RPS6KA5,RSKL,S6K alpha 5,S6K-alpha-5

### Product Information

<b>Buffer</b>	PBS with 0.05% NaN <sub>3</sub> and 40% Glycerol,pH7.4
<b>Purify</b>	Antigen affinity purification
<b>Dilution</b>	IHC 1:200-1:300, ELISA 1:5000-1:10000

### Background

RPS6KA5 (Ribosomal Protein S6 Kinase A5) is a Protein Coding gene. Among its related pathways are ERK Signaling and L1CAM interactions. Gene Ontology (GO) annotations related to this gene include transferase activity, transferring phosphorus-containing groups and protein tyrosine kinase activity. An important paralog of this gene is RPS6KA4.

#### For Research Use Only

Thank you for your recent purchase.  
 If you would like to learn more about antibodies, please visit [www.elabscience.com](http://www.elabscience.com).

**Focus on your research  
 Service for life science**

Applications:WB-Western Blot IHC-Immunohistochemistry IF-Immunofluorescence IP-Immunoprecipitation FC-Flow cytometry ChIP-Chromatin Immunoprecipitation Reactivity: H-Human R-Rat M-Mouse Mk-Monkey Dg-Dog Ch-Chicken Hm-Hamster Rb-Rabbit Sh-Sheep Pg-Pig Z-Zebrafish X-Xenopus C-Cow.