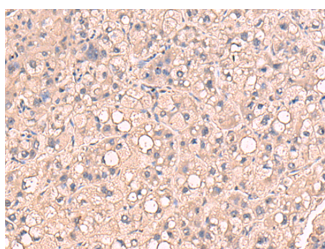


RIOK1 Polyclonal Antibody

Catalog No.	E-AB-19072	Reactivity	H,M
Storage	Store at -20°C. Avoid freeze / thaw cycles.	Host	Rabbit
Applications	IHC,ELISA	Isotype	IgG

Note: Centrifuge before opening to ensure complete recovery of vial contents.

Images



Immunohistochemistry of paraffin-embedded Human liver cancer tissue using RIOK1 Polyclonal Antibody at dilution of 1:80(×200)

Immunogen Information

Immunogen	Fusion protein of human RIOK1
Gene Accession	BC006104
Swissprot	Q9BRS2
Synonyms	AD034 ,bA288G3.1,RIO kinase 1 (yeast),RIO kinase 1,RIOK1,RIOK1,Serine/threonine-protein kinase rio1

Product Information

Buffer	PBS with 0.05% NaN ₃ and 40% Glycerol,pH7.4
Purify	Antigen affinity purification
Dilution	IHC 1:70-1:350, ELISA 1:5000-1:10000

Background

The protein encoded by this gene competes with pICln for inclusion in the protein arginine methyltransferase 5 complex. This complex targets substrates for dimethylation. The encoded protein is essential for the last steps in the maturation of 40S subunits.

For Research Use Only

Thank you for your recent purchase.

If you would like to learn more about antibodies, please visit www.elabscience.com.

**Focus on your research
Service for life science**

Applications:WB-Western Blot IHC-Immunohistochemistry IF-Immunofluorescence IP-Immunoprecipitation FC-Flow cytometry ChIP-Chromatin Immunoprecipitation Reactivity: H-Human R-Rat M-Mouse Mk-Monkey Dg-Dog Ch-Chicken Hm-Hamster Rb-Rabbit Sh-Sheep Pg-Pig Z-Zebrafish X-Xenopus C-Cow.