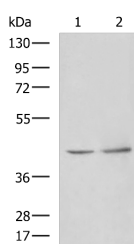


PAK1IP1 Polyclonal Antibody

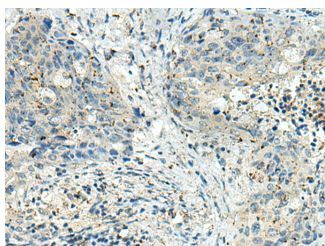
Catalog No.	E-AB-19074	Reactivity	H,M
Storage	Store at -20°C. Avoid freeze / thaw cycles.	Host	Rabbit
Applications	WB,IHC,ELISA	Isotype	IgG

Note: Centrifuge before opening to ensure complete recovery of vial contents.

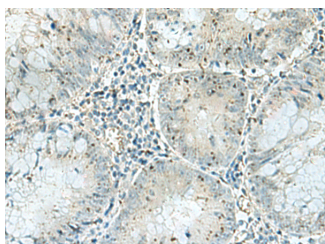
Images



Western blot analysis of Human heart tissue Hela cell lysates using PAK1IP1 Polyclonal Antibody at dilution of 1:900



Immunohistochemistry of paraffin-embedded Human cervical cancer tissue using PAK1IP1 Polyclonal Antibody at dilution of 1:120(x200)



Immunohistochemistry of paraffin-embedded Human colorectal cancer tissue using PAK1IP1 Polyclonal Antibody at dilution of 1:120(x200)

Immunogen Information

Immunogen	Fusion protein of human DENND6A
Gene Accession	BC040291
Swissprot	Q8IWF6
Synonyms	F116A,Fam116a,FLJ34969,hypothetical protein LOC201627,Protein FAM116A

Product Information

Calculated MW	44 kDa
Observed MW	Refer to figures
Buffer	PBS with 0.05% NaN ₃ and 40% Glycerol,pH7.4
Purify	Antigen affinity purification
Dilution	WB 1:500-1:2000, IHC 1:100-1:200, ELISA 1:5000-1:10000

Background

Guanine nucleotide exchange factor (GEF) for RAB14. Component of an endocytic recycling pathway that is required for the control of ADAM10 transport, shedding of N-cadherin/CDH2 by ADAM9 or ADAM10 and regulation of cell-cell junctions. Required for RAB14 recruitment to recycling endosomes.

For Research Use Only

Thank you for your recent purchase.
 If you would like to learn more about antibodies, please visit www.elabscience.com.

Focus on your research
Service for life science

Applications:WB-Western Blot IHC-Immunohistochemistry IF-Immunofluorescence IP-Immunoprecipitation FC-Flow cytometry ChIP-Chromatin Immunoprecipitation Reactivity: H-Human R-Rat M-Mouse Mk-Monkey Dg-Dog Ch-Chicken Hm-Hamster Rb-Rabbit Sh-Sheep Pg-Pig Z-Zebrafish X-Xenopus C-Cow.