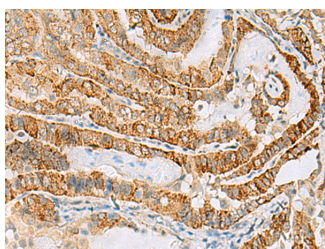


FARP2 Polyclonal Antibody

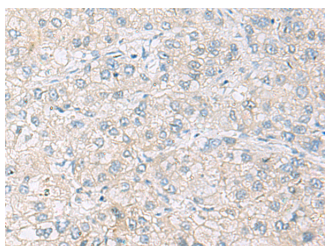
Catalog No.	E-AB-19082	Reactivity	H,M
Storage	Store at -20°C. Avoid freeze / thaw cycles.	Host	Rabbit
Applications	IHC,ELISA	Isotype	IgG

Note: Centrifuge before opening to ensure complete recovery of vial contents.

Images



Immunohistochemistry of paraffin-embedded Human thyroid cancer tissue using FARP2 Polyclonal Antibody at dilution of 1:70(×200)



Immunohistochemistry of paraffin-embedded Human liver cancer tissue using FARP2 Polyclonal Antibody at dilution of 1:70(×200)

Immunogen Information

Immunogen	Fusion protein of human FARP2
Gene Accession	BC021301
Swissprot	O94887
Synonyms	FARP2,FARP2,FERM,FERM domain including RhoGEF,FERM,FERM,FIR,FRG,KIAA0793

Product Information

Buffer	PBS with 0.05% NaN ₃ and 40% Glycerol,pH7.4
Purify	Antigen affinity purification
Dilution	IHC 1:50-1:200, ELISA 1:5000-1:10000

Background

FARP2 (FERM, ARH/RhoGEF And Pleckstrin Domain Protein 2) is a Protein Coding gene. Diseases associated with FARP2 include Pseudohypoparathyroidism Ia and Aarskog-Scott Syndrome. Among its related pathways are Development Endothelin-1/EDNRA signaling and Focal Adhesion. GO annotations related to this gene include Rho guanyl-nucleotide exchange factor activity and Rac guanyl-nucleotide exchange factor activity. An important paralog of this gene is FARP1.

For Research Use Only

Thank you for your recent purchase.
 If you would like to learn more about antibodies, please visit www.elabscience.com.

**Focus on your research
 Service for life science**

Applications:WB-Western Blot IHC-Immunohistochemistry IF-Immunofluorescence IP-Immunoprecipitation FC-Flow cytometry ChIP-Chromatin Immunoprecipitation Reactivity: H-Human R-Rat M-Mouse Mk-Monkey Dg-Dog Ch-Chicken Hm-Hamster Rb-Rabbit Sh-Sheep Pg-Pig Z-Zebrafish X-Xenopus C-Cow.