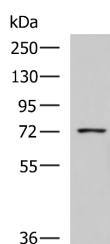


## GUSB Polyclonal Antibody

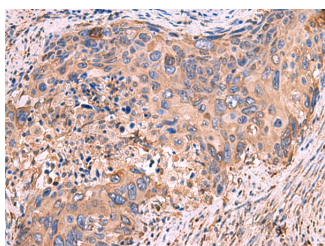
<b>Catalog No.</b>	E-AB-19084	<b>Reactivity</b>	H
<b>Storage</b>	Store at -20°C. Avoid freeze / thaw cycles.	<b>Host</b>	Rabbit
<b>Applications</b>	WB,IHC,ELISA	<b>Isotype</b>	IgG

**Note:** Centrifuge before opening to ensure complete recovery of vial contents.

### Images



Western blot analysis of K562 cell lysate using GUSB Polyclonal Antibody at dilution of 1:800



Immunohistochemistry of paraffin-embedded Human cervical cancer tissue using GUSB Polyclonal Antibody at dilution of 1:50(x200)

### Immunogen Information

<b>Immunogen</b>	Fusion protein of human GUSB
<b>Gene Accession</b>	BC014142
<b>Swissprot</b>	P08236
<b>Synonyms</b>	Ac2-223,asd,Beta G1,Beta glucuronidase,Beta-G1,Beta a-glucuronidase,BG,BGLR,FLJ39445,Glucuronidase beta,Gur,Gus,Gus-r,Gus-s,Gus-t,Gus-u,GUSB,Gut,MPS7

### Product Information

<b>Calculated MW</b>	75 kDa
<b>Observed MW</b>	Refer to figures
<b>Buffer</b>	PBS with 0.05% NaN <sub>3</sub> and 40% Glycerol,pH7.4
<b>Purify</b>	Antigen affinity purification
<b>Dilution</b>	WB 1:500-1:2000, IHC 1:40-1:200, ELISA 1:5000-1:10000

### Background

The GUSB gene encodes beta-glucuronidase, a lysosomal hydrolase involved in the stepwise degradation of glucuronic acid-containing glycosaminoglycans. It is a tetrameric glycoprotein composed of identical subunits. GUSB plays an important role in the degradation of dermatan and keratan sulfates. It has two isoforms.

#### For Research Use Only

Thank you for your recent purchase.  
 If you would like to learn more about antibodies, please visit [www.elabscience.com](http://www.elabscience.com).

**Focus on your research  
 Service for life science**

Applications:WB-Western Blot IHC-Immunohistochemistry IF-Immunofluorescence IP-Immunoprecipitation FC-Flow cytometry ChIP-Chromatin Immunoprecipitation Reactivity: H-Human R-Rat M-Mouse Mk-Monkey Dg-Dog Ch-Chicken Hm-Hamster Rb-Rabbit Sh-Sheep Pg-Pig Z-Zebrafish X-Xenopus C-Cow.