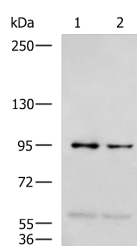


## NVL Polyclonal Antibody

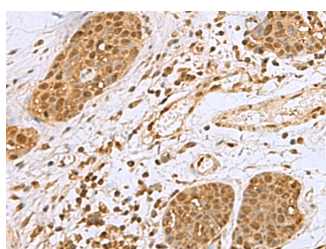
<b>Catalog No.</b>	E-AB-19086	<b>Reactivity</b>	H,M
<b>Storage</b>	Store at -20°C. Avoid freeze / thaw cycles.	<b>Host</b>	Rabbit
<b>Applications</b>	WB,IHC,ELISA	<b>Isotype</b>	IgG

**Note:** Centrifuge before opening to ensure complete recovery of vial contents.

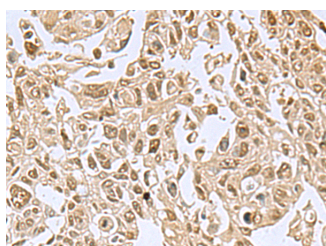
### Images



Western blot analysis of 293T and Jurkat cell lysates using NVL Polyclonal Antibody at dilution of 1:1000



Immunohistochemistry of paraffin-embedded Human esophagus cancer tissue using NVL Polyclonal Antibody at dilution of 1:80(×200)



Immunohistochemistry of paraffin-embedded Human lung cancer tissue using NVL Polyclonal Antibody at dilution of 1:80(×200)

### Immunogen Information

<b>Immunogen</b>	Fusion protein of human NVL
<b>Gene Accession</b>	BC012105
<b>Swissprot</b>	O15381
<b>Synonyms</b>	Nuclear valosin containing protein like <sup>2</sup> Nuclear VCP-like protein,Nvl,NVL,NVLp

### Product Information

<b>Calculated MW</b>	95 kDa
<b>Observed MW</b>	Refer to figures
<b>Buffer</b>	PBS with 0.05% NaN <sub>3</sub> and 40% Glycerol,pH7.4
<b>Purify</b>	Antigen affinity purification
<b>Dilution</b>	WB 1:1000-1:5000, IHC 1:50-1:200, ELISA 1:5000-1:10000

### Background

This gene encodes a member of the AAA (ATPases associated with diverse cellular activities) superfamily. Multiple transcript variants encoding different isoforms have been found for this gene. Two encoded proteins, described as major and minor isoforms, have been localized to distinct regions of the nucleus. The largest encoded protein (major isoform) has been localized to the nucleolus and shown to participate in ribosome biosynthesis (PMID: 15469983, 16782053), while the minor isoform has been localized to the nucleoplasm.

#### For Research Use Only

Thank you for your recent purchase.  
 If you would like to learn more about antibodies, please visit [www.elabscience.com](http://www.elabscience.com).

**Focus on your research  
 Service for life science**

Applications:WB-Western Blot IHC-Immunohistochemistry IF-Immunofluorescence IP-Immunoprecipitation FC-Flow cytometry ChIP-Chromatin Immunoprecipitation Reactivity: H-Human R-Rat M-Mouse Mk-Monkey Dg-Dog Ch-Chicken Hm-Hamster Rb-Rabbit Sh-Sheep Pg-Pig Z-Zebrafish X-Xenopus C-Cow.