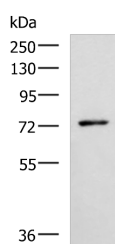


L3MBTL2 Polyclonal Antibody

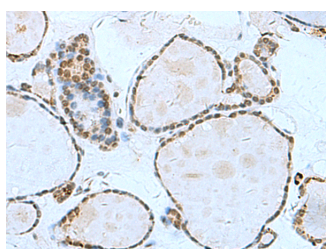
Catalog No.	E-AB-19094	Reactivity	H,M,R
Storage	Store at -20°C. Avoid freeze / thaw cycles.	Host	Rabbit
Applications	WB,IHC,ELISA	Isotype	IgG

Note: Centrifuge before opening to ensure complete recovery of vial contents.

Images



Western blot analysis of Mouse thymus tissue lysate using L3MBTL2 Polyclonal Antibody at dilution of 1:1000



Immunohistochemistry of paraffin-embedded Human thyroid cancer tissue using L3MBTL2 Polyclonal Antibody at dilution of 1:70(x200)

Immunogen Information

Immunogen	Fusion protein of human L3MBTL2
Gene Accession	BC017191
Swissprot	Q969R5
Synonyms	L3MBTL2,Lethal,Lethal(3)malignant brain tumor-like protein 2,LMBL2

Product Information

Calculated MW	79 kDa
Observed MW	Refer to figures
Buffer	PBS with 0.05% NaN ₃ and 40% Glycerol,pH7.4
Purify	Antigen affinity purification
Dilution	WB 1:500-1:2000, IHC 1:50-1:200, ELISA 1:5000-1:10000

Background

Putative Polycomb group (PcG) protein. PcG proteins maintain the transcriptionally repressive state of genes, probably via a modification of chromatin, rendering it heritably changed in its expressibility. Its association with a chromatin-remodeling complex suggests that it may contribute to prevent expression of genes that trigger the cell into mitosis. Binds to monomethylated and dimethylated 'Lys-20' on histone H4. Binds histone H3 peptides that are monomethylated or dimethylated on 'Lys-4', 'Lys-9' or 'Lys-27'.

For Research Use Only

Thank you for your recent purchase.
 If you would like to learn more about antibodies, please visit www.elabscience.com.

**Focus on your research
 Service for life science**

Applications:WB-Western Blot IHC-Immunohistochemistry IF-Immunofluorescence IP-Immunoprecipitation FC-Flow cytometry ChIP-Chromatin Immunoprecipitation Reactivity: H-Human R-Rat M-Mouse Mk-Monkey Dg-Dog Ch-Chicken Hm-Hamster Rb-Rabbit Sh-Sheep Pg-Pig Z-Zebrafish X-Xenopus C-Cow.