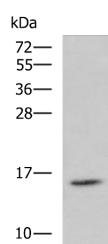


## H2AFJ Polyclonal Antibody

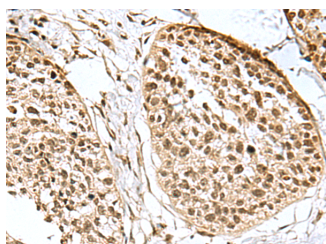
<b>Catalog No.</b>	E-AB-19114	<b>Reactivity</b>	H,M,R
<b>Storage</b>	Store at -20°C. Avoid freeze / thaw cycles.	<b>Host</b>	Rabbit
<b>Applications</b>	WB,IHC,ELISA	<b>Isotype</b>	IgG

**Note:** Centrifuge before opening to ensure complete recovery of vial contents.

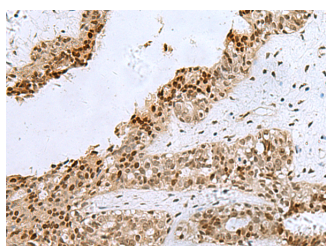
### Images



Western blot analysis of Jurkat cell lysate using H2AFJ Polyclonal Antibody at dilution of 1:800



Immunohistochemistry of paraffin-embedded Human esophagus cancer tissue using H2AFJ Polyclonal Antibody at dilution of 1:170(×200)



Immunohistochemistry of paraffin-embedded Human breast cancer tissue using H2AFJ Polyclonal Antibody at dilution of 1:170(×200)

### Immunogen Information

<b>Immunogen</b>	Fusion protein of human H2AFJ
<b>Gene Accession</b>	BC003602
<b>Swissprot</b>	Q9BTM1
<b>Synonyms</b>	H2A Histone Family Member J,Histone H2A.J,H2a/J

### Product Information

<b>Calculated MW</b>	14 kDa
<b>Observed MW</b>	Refer to figures
<b>Buffer</b>	PBS with 0.05% NaN <sub>3</sub> and 40% Glycerol,pH7.4
<b>Purify</b>	Antigen affinity purification
<b>Dilution</b>	WB 1:500-1:2000, IHC 1:200-1:300, ELISA 1:5000-1:10000

### Background

Histones are basic nuclear proteins that are responsible for the nucleosome structure of the chromosomal fiber in eukaryotes. Nucleosomes consist of approximately 146 bp of DNA wrapped around a histone octamer composed of pairs of each of the four core histones (H2A, H2B, H3, and H4). The chromatin fiber is further compacted through the interaction of a linker histone, H1, with the DNA between the nucleosomes to form higher order chromatin structures. This gene is located on chromosome 12 and encodes a replication-independent histone that is a variant H2A histone. The protein is divergent at the C-terminus compared to the consensus H2A histone family member. This gene also encodes an antimicrobial peptide with antibacterial and antifungal activity.

### For Research Use Only

Thank you for your recent purchase.  
 If you would like to learn more about antibodies, please visit [www.elabscience.com](http://www.elabscience.com).

**Focus on your research  
 Service for life science**

Applications:WB-Western Blot IHC-Immunohistochemistry IF-Immunofluorescence IP-Immunoprecipitation FC-Flow cytometry ChIP-Chromatin Immunoprecipitation Reactivity: H-Human R-Rat M-Mouse Mk-Monkey Dg-Dog Ch-Chicken Hm-Hamster Rb-Rabbit Sh-Sheep Pg-Pig Z-Zebrafish X-Xenopus C-Cow.