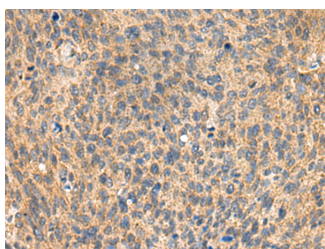


MIA Polyclonal Antibody

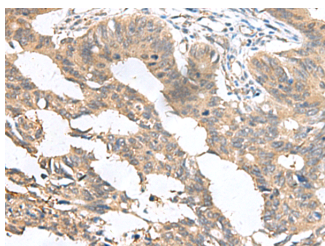
Catalog No.	E-AB-19118	Reactivity	H,M,R
Storage	Store at -20°C. Avoid freeze / thaw cycles.	Host	Rabbit
Applications	IHC,ELISA	Isotype	IgG

Note: Centrifuge before opening to ensure complete recovery of vial contents.

Images



Immunohistochemistry of paraffin-embedded Human cervical cancer tissue using MIA Polyclonal Antibody at dilution of 1:100(×200)



Immunohistochemistry of paraffin-embedded Human colorectal cancer tissue using MIA Polyclonal Antibody at dilution of 1:100(×200)

Immunogen Information

Immunogen	Fusion protein of human MIA
Gene Accession	BC005910
Swissprot	Q16674
Synonyms	CD RAP,CDRAP,Melanoma derived growth regulatory protein precursor,Mia,MIA

Product Information

Buffer	PBS with 0.05% NaN ₃ and 40% Glycerol,pH7.4
Purify	Antigen affinity purification
Dilution	IHC 1:100-1:300, ELISA 1:5000-1:10000

Background

MIA (Melanoma Inhibitory Activity) is a Protein Coding gene. Diseases associated with MIA include Melanoma and Skin Melanoma. Among its related pathways are Neural Crest Differentiation. GO annotations related to this gene include growth factor activity. An important paralog of this gene is MIA-RAB4B.

For Research Use Only

Thank you for your recent purchase.
 If you would like to learn more about antibodies, please visit www.elabscience.com.

**Focus on your research
 Service for life science**

Applications:WB-Western Blot IHC-Immunohistochemistry IF-Immunofluorescence IP-Immunoprecipitation FC-Flow cytometry ChIP-Chromatin Immunoprecipitation Reactivity: H-Human R-Rat M-Mouse Mk-Monkey Dg-Dog Ch-Chicken Hm-Hamster Rb-Rabbit Sh-Sheep Pg-Pig Z-Zebrafish X-Xenopus C-Cow.