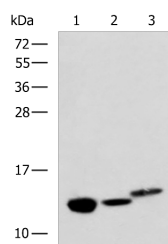


RIDA Polyclonal Antibody

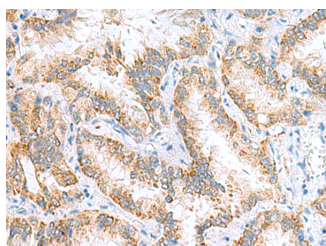
Catalog No.	E-AB-19120	Reactivity	H,M,R
Storage	Store at -20°C. Avoid freeze / thaw cycles.	Host	Rabbit
Applications	WB,IHC,ELISA	Isotype	IgG

Note: Centrifuge before opening to ensure complete recovery of vial contents.

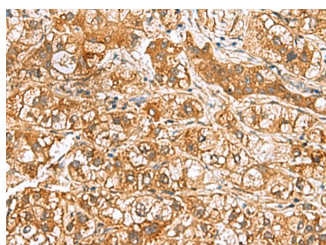
Images



Western blot analysis of Rat kidney tissue Mouse liver tissue and Human fetal liver tissue lysates using RIDA Polyclonal Antibody at dilution of 1:600



Immunohistochemistry of paraffin-embedded Human lung cancer tissue using RIDA Polyclonal Antibody at dilution of 1:65(×200)



Immunohistochemistry of paraffin-embedded Human liver cancer tissue using RIDA Polyclonal Antibody at dilution of 1:65(×200)

Immunogen Information

Immunogen	Fusion protein of human RIDA
Gene Accession	BC010280
Swissprot	P52758
Synonyms	Hrsp12,p14.5,Perchloric acid soluble protein,PSP,RIDA,UK114 antigen homolog,UK114

Product Information

Calculated MW	14 kDa
Observed MW	Refer to figures
Buffer	PBS with 0.05% NaN ₃ and 40% Glycerol,pH7.4
Purify	Antigen affinity purification
Dilution	WB 1:500-1:2000, IHC 1:50-1:200, ELISA 1:5000-1:10000

Background

Catalyzes the hydrolytic deamination of enamine/imine intermediates that form during the course of normal metabolism. May facilitate the release of ammonia from these potentially toxic reactive metabolites, reducing their impact on cellular components. It may act on enamine/imine intermediates formed by several types of pyridoxal-5'-phosphate-dependent dehydratases including L-threonine dehydratase. May also function as an endoribonuclease, cleaving mRNA phosphodiester bonds of single-stranded RNA (By similarity). Thereby, may inhibit protein translation (PubMed:8973653).

For Research Use Only

Thank you for your recent purchase.
 If you would like to learn more about antibodies, please visit www.elabscience.com.

**Focus on your research
 Service for life science**

Applications:WB-Western Blot IHC-Immunohistochemistry IF-Immunofluorescence IP-Immunoprecipitation FC-Flow cytometry ChIP-Chromatin Immunoprecipitation Reactivity: H-Human R-Rat M-Mouse Mk-Monkey Dg-Dog Ch-Chicken Hm-Hamster Rb-Rabbit Sh-Sheep Pg-Pig Z-Zebrafish X-Xenopus C-Cow.