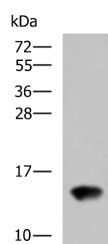


FAM19A4 Polyclonal Antibody

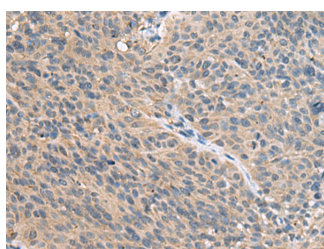
Catalog No.	E-AB-19121	Reactivity	H,M,R
Storage	Store at -20°C. Avoid freeze / thaw cycles.	Host	Rabbit
Applications	WB,IHC,ELISA	Isotype	IgG

Note: Centrifuge before opening to ensure complete recovery of vial contents.

Images



Western blot analysis of Rat kidney tissue lysate using FAM19A4 Polyclonal Antibody at dilution of 1:650



Immunohistochemistry of paraffin-embedded Human cervical cancer tissue using FAM19A4 Polyclonal Antibody at dilution of 1:55(x200)

Immunogen Information

Immunogen	Fusion protein of human FAM19A4
Gene Accession	BC031566
Swissprot	Q96LR4
Synonyms	Family with sequence similarity 19 member A4,FLJ25161,Protein FAM19A4,TAFA 4,TAFA4

Product Information

Calculated MW	16 kDa
Observed MW	Refer to figures
Buffer	PBS with 0.05% NaN ₃ and 40% Glycerol,pH7.4
Purify	Antigen affinity purification
Dilution	WB 1:500-1:2000, IHC 1:50-1:200, ELISA 1:5000-1:10000

Background

This gene is a member of the TAFA family which is composed of five highly homologous genes that encode small secreted proteins. These proteins contain conserved cysteine residues at fixed positions, and are distantly related to MIP-1alpha, a member of the CC-chemokine family. The TAFA proteins are predominantly expressed in specific regions of the brain, and are postulated to function as brain-specific chemokines or neurokinines, that act as regulators of immune and nervous cells. Alternatively spliced transcript variants have been observed for this gene.

For Research Use Only

Thank you for your recent purchase.
 If you would like to learn more about antibodies, please visit www.elabscience.com.

**Focus on your research
 Service for life science**

Applications:WB-Western Blot IHC-Immunohistochemistry IF-Immunofluorescence IP-Immunoprecipitation FC-Flow cytometry ChIP-Chromatin Immunoprecipitation Reactivity: H-Human R-Rat M-Mouse Mk-Monkey Dg-Dog Ch-Chicken Hm-Hamster Rb-Rabbit Sh-Sheep Pg-Pig Z-Zebrafish X-Xenopus C-Cow.