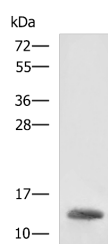


HBZ Polyclonal Antibody

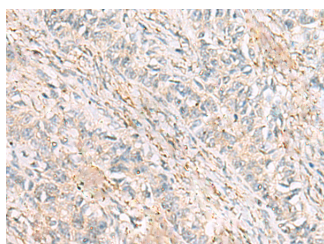
Catalog No.	E-AB-19122	Reactivity	H
Storage	Store at -20°C. Avoid freeze / thaw cycles.	Host	Rabbit
Applications	WB,IHC,ELISA	Isotype	IgG

Note: Centrifuge before opening to ensure complete recovery of vial contents.

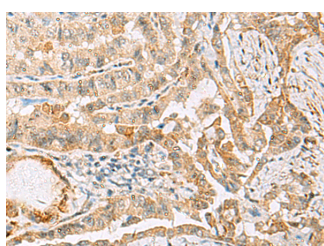
Images



Western blot analysis of K562 cell lysate using HBZ Polyclonal Antibody at dilution of 1:1600



Immunohistochemistry of paraffin-embedded Human ovarian cancer tissue using HBZ Polyclonal Antibody at dilution of 1:120(×200)



Immunohistochemistry of paraffin-embedded Human thyroid cancer tissue using HBZ Polyclonal Antibody at dilution of 1:120(×200)

Immunogen Information

Immunogen	Fusion protein of human HBZ
Gene Accession	BC027892
Swissprot	P02008
Synonyms	HBAZ,HBAZ,HBZ 2,HBZ,HBZ2,Hemoglobin subunit zeta,Hemoglobin zeta,Hemoglobin zeta chain,Zeta globin,Zeta-globin

Product Information

Calculated MW	16 kDa
Observed MW	Refer to figures
Buffer	PBS with 0.05% NaN ₃ and 40% Glycerol,pH7.4
Purify	Antigen affinity purification
Dilution	WB 1:500-1:2000, IHC 1:100-1:300, ELISA 1:5000-1:10000

Background

Zeta-globin is an alpha-like hemoglobin. The zeta-globin polypeptide is synthesized in the yolk sac of the early embryo, while alpha-globin is produced throughout fetal and adult life. The zeta-globin gene is a member of the human alpha-globin gene cluster that includes five functional genes and two pseudogenes. The order of genes is: 5' - zeta - pseudozeta - mu - pseudoalpha-1 - alpha-2 - alpha-1 - theta1 - 3'.

For Research Use Only

Thank you for your recent purchase.
 If you would like to learn more about antibodies, please visit www.elabscience.com.

Focus on your research Service for life science

Applications:WB-Western Blot IHC-Immunohistochemistry IF-Immunofluorescence IP-Immunoprecipitation FC-Flow cytometry ChIP-Chromatin Immunoprecipitation Reactivity: H-Human R-Rat M-Mouse Mk-Monkey Dg-Dog Ch-Chicken Hm-Hamster Rb-Rabbit Sh-Sheep Pg-Pig Z-Zebrafish X-Xenopus C-Cow.