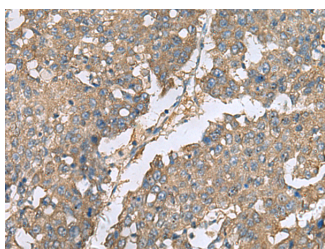


EIF1AX Polyclonal Antibody

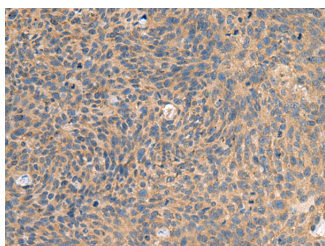
Catalog No.	E-AB-19124	Reactivity	H,M
Storage	Store at -20°C. Avoid freeze / thaw cycles.	Host	Rabbit
Applications	IHC,ELISA	Isotype	IgG

Note: Centrifuge before opening to ensure complete recovery of vial contents.

Images



Immunohistochemistry of paraffin-embedded Human liver cancer tissue using EIF1AX Polyclonal Antibody at dilution of 1:65(×200)



Immunohistochemistry of paraffin-embedded Human cervical cancer tissue using EIF1AX Polyclonal Antibody at dilution of 1:65(×200)

Immunogen Information

Immunogen	Fusion protein of human EIF1AX
Gene Accession	BC000793
Swissprot	P47813
Synonyms	eIF-1A,eIF-1A X isoform,eIF-4C,EIF1A,EIF1AP1,EIF1AX,EIF4C

Product Information

Buffer	PBS with 0.05% NaN3 and 40% Glycerol,pH7.4
Purify	Antigen affinity purification
Dilution	IHC 1:50-1:200, ELISA 1:5000-1:10000

Background

This gene encodes an essential eukaryotic translation initiation factor. The protein is required for the binding of the 43S complex (a 40S subunit, eIF2/GTP/Met-tRNA_i and eIF3) to the 5' end of capped RNA.

For Research Use Only

Thank you for your recent purchase.
 If you would like to learn more about antibodies, please visit www.elabscience.com.

**Focus on your research
 Service for life science**

Applications:WB-Western Blot IHC-Immunohistochemistry IF-Immunofluorescence IP-Immunoprecipitation FC-Flow cytometry ChIP-Chromatin Immunoprecipitation Reactivity: H-Human R-Rat M-Mouse Mk-Monkey Dg-Dog Ch-Chicken Hm-Hamster Rb-Rabbit Sh-Sheep Pg-Pig Z-Zebrafish X-Xenopus C-Cow.