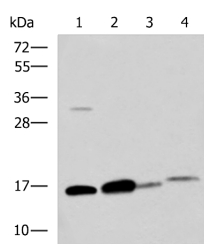


ZG16 Polyclonal Antibody

Catalog No.	E-AB-19137	Reactivity	H,M
Storage	Store at -20°C. Avoid freeze / thaw cycles.	Host	Rabbit
Applications	WB,ELISA	Isotype	IgG

Note: Centrifuge before opening to ensure complete recovery of vial contents.

Images



Western blot analysis of Human sigmoid tissue Mouse large intestine tissue Mouse small intestines tissue Mouse Pancreas tissue lysates using ZG16 Polyclonal Antibody at dilution of 1:800

Immunogen Information

Immunogen	Fusion protein of human ZG16
Gene Accession	BC029149
Swissprot	O60844
Synonyms	Zg16,ZG16,ZG16A,Zymogen granule membrane protein 16,Zymogen granule protein 16,Zymogen granule protein 16 homolog

Product Information

Calculated MW	18 kDa
Observed MW	Refer to figures
Buffer	PBS with 0.05% NaN ₃ and 40% Glycerol,pH7.4
Purify	Antigen affinity purification
Dilution	WB 1:500-1:2000, ELISA 1:5000-1:10000

Background

May play a role in protein trafficking. May act as a linker molecule between the submembranous matrix on the luminal side of zymogen granule membrane (ZGM) and aggregated secretory proteins during granule formation in the TGN.

For Research Use Only

Thank you for your recent purchase.
 If you would like to learn more about antibodies, please visit www.elabscience.com.

**Focus on your research
 Service for life science**

Applications:WB-Western Blot IHC-Immunohistochemistry IF-Immunofluorescence IP-Immunoprecipitation FC-Flow cytometry ChIP-Chromatin Immunoprecipitation Reactivity: H-Human R-Rat M-Mouse Mk-Monkey Dg-Dog Ch-Chicken Hm-Hamster Rb-Rabbit Sh-Sheep Pg-Pig Z-Zebrafish X-Xenopus C-Cow.