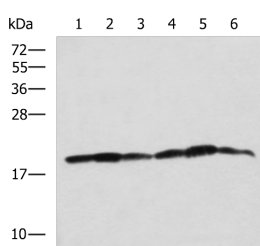


BLOC1S6 Polyclonal Antibody

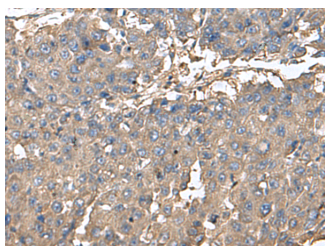
Catalog No.	E-AB-19140	Reactivity	H,M,R
Storage	Store at -20°C. Avoid freeze / thaw cycles.	Host	Rabbit
Applications	WB,IHC,ELISA	Isotype	IgG

Note: Centrifuge before opening to ensure complete recovery of vial contents.

Images



Western blot analysis of 293T K562 and HepG2 cell lysates using BLOC1S6 Polyclonal Antibody at dilution of 1:650



Immunohistochemistry of paraffin-embedded Human liver cancer tissue using BLOC1S6 Polyclonal Antibody at dilution of 1:95(×200)

Immunogen Information

Immunogen	Fusion protein of human BLOC1S6
Gene Accession	BC004819
Swissprot	Q9UL45
Synonyms	Bloc1s6,PALLID,PLDN,PLDN,Syntaxin 13 binding protein,Syntaxin 13-interacting protein

Product Information

Calculated MW	20 kDa
Observed MW	Refer to figures
Buffer	PBS with 0.05% NaN ₃ and 40% Glycerol,pH7.4
Purify	Antigen affinity purification
Dilution	WB 1:1000-1:5000, IHC 1:100-1:300, ELISA 1:5000-1:10000

Background

The protein encoded by this gene may play a role in intracellular vesicle trafficking. It interacts with Syntaxin 13 which mediates intracellular membrane fusion. Mutations in this gene cause symptoms associated with Hermansky-Pudlak syndrome-9. Alternative splicing results in multiple transcript variants. A pseudogene related to this gene is located on the X chromosome.

For Research Use Only

Thank you for your recent purchase.
 If you would like to learn more about antibodies, please visit www.elabscience.com.

**Focus on your research
 Service for life science**

Applications:WB-Western Blot IHC-Immunohistochemistry IF-Immunofluorescence IP-Immunoprecipitation FC-Flow cytometry ChIP-Chromatin Immunoprecipitation Reactivity: H-Human R-Rat M-Mouse Mk-Monkey Dg-Dog Ch-Chicken Hm-Hamster Rb-Rabbit Sh-Sheep Pg-Pig Z-Zebrafish X-Xenopus C-Cow.