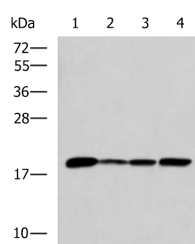


## AK6 Polyclonal Antibody

<b>Catalog No.</b>	E-AB-19141	<b>Reactivity</b>	H,M,R
<b>Storage</b>	Store at -20°C. Avoid freeze / thaw cycles.	<b>Host</b>	Rabbit
<b>Applications</b>	WB,ELISA	<b>Isotype</b>	IgG

**Note:** Centrifuge before opening to ensure complete recovery of vial contents.

### Images



Western blot analysis of K562 Jurkat HepG2 cell Human fetal intestines tissue lysates using AK6 Polyclonal Antibody at dilution of 1:800

### Immunogen Information

<b>Immunogen</b>	Fusion protein of human AK6
<b>Gene Accession</b>	BC007349
<b>Swissprot</b>	Q9Y3D8
<b>Synonyms</b>	AK6,CGI-137,CIP,hCINAP,KAD6,TAF9

### Product Information

<b>Calculated MW</b>	20 kDa
<b>Observed MW</b>	Refer to figures
<b>Buffer</b>	PBS with 0.05% NaN <sub>3</sub> and 40% Glycerol,pH7.4
<b>Purify</b>	Antigen affinity purification
<b>Dilution</b>	WB 1:1000-1:5000, ELISA 1:5000-1:10000

### Background

This gene encodes a protein that belongs to the adenylate kinase family of enzymes. The protein has a nuclear localization and contains Walker A (P-loop) and Walker B motifs and a metal-coordinating residue. The protein may be involved in regulation of Cajal body formation. In human, AK6 and TAF9 (GeneID: 6880) are two distinct genes that share 5' exons. Alternative splicing results in multiple transcript variants. AK6 (Adenylate Kinase 6) is a Protein Coding gene. Among its related pathways are Ribosome biogenesis in eukaryotes and Purine metabolism (REACTOME). GO annotations related to this gene include ATPase activity and adenylate kinase activity.

#### For Research Use Only

Thank you for your recent purchase.  
 If you would like to learn more about antibodies, please visit [www.elabscience.com](http://www.elabscience.com).

**Focus on your research  
 Service for life science**

Applications:WB-Western Blot IHC-Immunohistochemistry IF-Immunofluorescence IP-Immunoprecipitation FC-Flow cytometry ChIP-Chromatin Immunoprecipitation Reactivity: H-Human R-Rat M-Mouse Mk-Monkey Dg-Dog Ch-Chicken Hm-Hamster Rb-Rabbit Sh-Sheep Pg-Pig Z-Zebrafish X-Xenopus C-Cow.