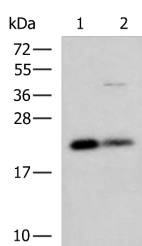


CSRP2 Polyclonal Antibody

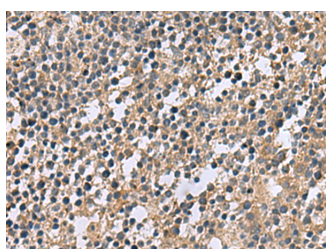
Catalog No.	E-AB-19155	Reactivity	H,M,R
Storage	Store at -20°C. Avoid freeze / thaw cycles.	Host	Rabbit
Applications	WB,IHC,ELISA	Isotype	IgG

Note: Centrifuge before opening to ensure complete recovery of vial contents.

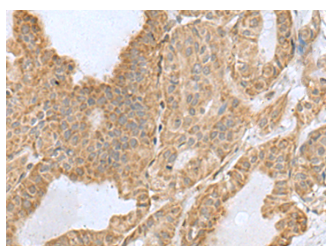
Images



Western blot analysis of HepG2 and A549 cell lysates using CSRP2 Polyclonal Antibody at dilution of 1:900



Immunohistochemistry of paraffin-embedded Human tonsil tissue using CSRP2 Polyclonal Antibody at dilution of 1:60(x200)



Immunohistochemistry of paraffin-embedded Human thyroid cancer tissue using CSRP2 Polyclonal Antibody at dilution of 1:60(x200)

Immunogen Information

Immunogen	Fusion protein of human CSRP2
Gene Accession	BC000992
Swissprot	Q16527
Synonyms	Cysteine rich protein 2, Cysteine-rich protein 2, LMO-5, LMO5, SmLIM, Smooth muscle cell LIM protein

Product Information

Calculated MW	21 kDa
Observed MW	Refer to figures
Buffer	PBS with 0.05% NaN ₃ and 40% Glycerol, pH7.4
Purify	Antigen affinity purification
Dilution	WB 1:1000-1:5000, IHC 1:50-1:200, ELISA 1:5000-1:10000

Background

CSRP2 is a member of the CSRP family of genes, encoding a group of LIM domain proteins, which may be involved in regulatory processes important for development and cellular differentiation. CRP2 contains two copies of the cysteine-rich amino acid sequence motif (LIM) with putative zinc-binding activity, and may be involved in regulating ordered cell growth. Other genes in the family include CSRP1 and CSRP3. Alternative splicing results in multiple transcript variants.

For Research Use Only

Thank you for your recent purchase.
 If you would like to learn more about antibodies, please visit www.elabscience.com.

**Focus on your research
 Service for life science**

Applications: WB-Western Blot IHC-Immunohistochemistry IF-Immunofluorescence IP-Immunoprecipitation FC-Flow cytometry ChIP-Chromatin Immunoprecipitation Reactivity: H-Human R-Rat M-Mouse Mk-Monkey Dg-Dog Ch-Chicken Hm-Hamster Rb-Rabbit Sh-Sheep Pg-Pig Z-Zebrafish X-Xenopus C-Cow.