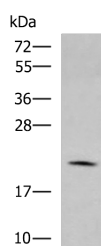


MARCKSL1 Polyclonal Antibody

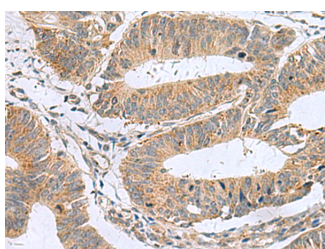
| | | | |
|---------------------|---|-------------------|--------|
| Catalog No. | E-AB-19157 | Reactivity | H,M,R |
| Storage | Store at -20°C. Avoid freeze / thaw cycles. | Host | Rabbit |
| Applications | WB,IHC,ELISA | Isotype | IgG |

Note: Centrifuge before opening to ensure complete recovery of vial contents.

Images



Western blot analysis of RAW264.7 cell lysate using MARCKSL1 Polyclonal Antibody at dilution of 1:750



Immunohistochemistry of paraffin-embedded Human colorectal cancer tissue using MARCKSL1 Polyclonal Antibody at dilution of 1:50(x200)

Immunogen Information

| | |
|-----------------------|---|
| Immunogen | Fusion protein of human MARCKSL1 |
| Gene Accession | BC007904 |
| Swissprot | P49006 |
| Synonyms | MARCKS like protein 1, MARCKS related protein, MARCKS-like protein 1, MARCKS-related protein, MARCKSL1, MLP, MLP1, MRP, MRP |

Product Information

| | |
|----------------------|---|
| Calculated MW | 20 kDa |
| Observed MW | Refer to figures |
| Buffer | PBS with 0.05% NaN ₃ and 40% Glycerol, pH7.4 |
| Purify | Antigen affinity purification |
| Dilution | WB 1:500-1:2000, IHC 1:50-1:100, ELISA 1:5000-1:10000 |

Background

This gene encodes a member of the myristoylated alanine-rich C-kinase substrate (MARCKS) family. Members of this family play a role in cytoskeletal regulation, protein kinase C signaling and calmodulin signaling. The encoded protein affects the formation of adherens junction. Alternative splicing results in multiple transcript variants. Pseudogenes of this gene are located on the long arm of chromosomes 6 and 10.

For Research Use Only

Thank you for your recent purchase.
 If you would like to learn more about antibodies, please visit www.elabscience.com.

**Focus on your research
 Service for life science**

Applications: WB-Western Blot IHC-Immunohistochemistry IF-Immunofluorescence IP-Immunoprecipitation FC-Flow cytometry ChIP-Chromatin Immunoprecipitation Reactivity: H-Human R-Rat M-Mouse Mk-Monkey Dg-Dog Ch-Chicken Hm-Hamster Rb-Rabbit Sh-Sheep Pg-Pig Z-Zebrafish X-Xenopus C-Cow.