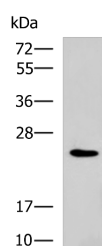


RAB38 Polyclonal Antibody

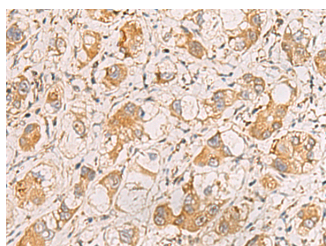
Catalog No.	E-AB-19172	Reactivity	H,M
Storage	Store at -20°C. Avoid freeze / thaw cycles.	Host	Rabbit
Applications	WB,IHC,ELISA	Isotype	IgG

Note: Centrifuge before opening to ensure complete recovery of vial contents.

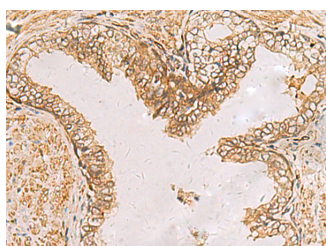
Images



Western blot analysis of NIH/3T3 cell lysate using RAB38 Polyclonal Antibody at dilution of 1:900



Immunohistochemistry of paraffin-embedded Human liver cancer tissue using RAB38 Polyclonal Antibody at dilution of 1:60(x200)



Immunohistochemistry of paraffin-embedded Human prostate cancer tissue using RAB38 Polyclonal Antibody at dilution of 1:60(x200)

Immunogen Information

Immunogen	Fusion protein of human RAB38
Gene Accession	BC015808
Swissprot	P57729
Synonyms	Antigen NY MEL 1, Melanoma antigen NY MEL 1, Melanoma antigen NY-MEL-1, NY MEL 1, RAB38, Rab38, rrGTPbp

Product Information

Calculated MW	24 kDa
Observed MW	Refer to figures
Buffer	PBS with 0.05% NaN ₃ and 40% Glycerol, pH7.4
Purify	Antigen affinity purification
Dilution	WB 1:500-1:2000, IHC 1:50-1:200, ELISA 1:5000-1:10000

Background

Ras-related protein Rab-38 is a protein that in humans is encoded by the RAB38 gene. On the basis of human genome sequence data, the RAB38 locus on chromosome 11 is flanked proximally by tyrosinase at 11q14-q21 and distally by EED at 11q14.2-q22.3 and MYO7A at 11q13.5. In melanocytic cells RAB38 gene expression may be regulated by MITF. May be involved in melanosomal transport and docking. Involved in the proper sorting of TYRP1.

For Research Use Only

Thank you for your recent purchase.
 If you would like to learn more about antibodies, please visit www.elabscience.com.

**Focus on your research
 Service for life science**

Applications: WB-Western Blot IHC-Immunohistochemistry IF-Immunofluorescence IP-Immunoprecipitation FC-Flow cytometry ChIP-Chromatin Immunoprecipitation Reactivity: H-Human R-Rat M-Mouse Mk-Monkey Dg-Dog Ch-Chicken Hm-Hamster Rb-Rabbit Sh-Sheep Pg-Pig Z-Zebrafish X-Xenopus C-Cow.